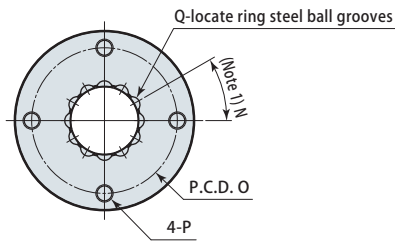


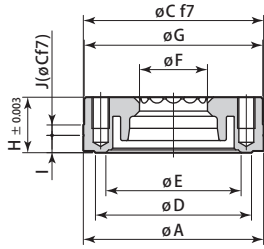
Dimensions

CPS-
D03
E06
F10
F16
F25
F40

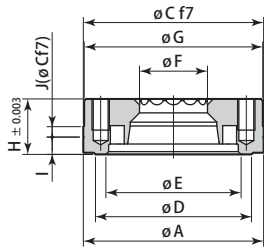
Locate ring
(upper surface mounting)



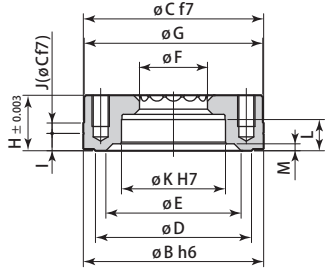
CPS-D03~16T Locate ring (D type)



CPS-E03~40T Locate ring (E type)

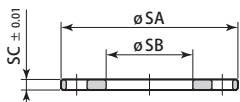
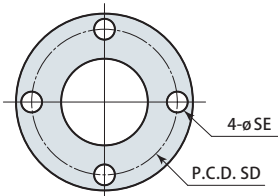


CPS-F03~40T Locate ring (F type)



CPS-S
S03
S06
S10
S16
S25
S40

Shim (option)



(mm)

Model	CPS- $\frac{D}{F}$ 03T	CPS- $\frac{D}{F}$ 06T	CPS- $\frac{D}{F}$ 10T	CPS- $\frac{D}{F}$ 16T	CPS- $\frac{E}{F}$ 25T	CPS- $\frac{E}{F}$ 40T
A	40 ^{+0.005} _{-0.011}	52 ^{+0.006} _{-0.013}	60 ^{+0.006} _{-0.013}	80 ^{+0.006} _{-0.013}	95 ^{+0.007} _{-0.015}	115 ^{+0.007} _{-0.015}
B	40 ⁰ _{-0.016}	52 ⁰ _{-0.019}	60 ⁰ _{-0.019}	80 ⁰ _{-0.019}	95 ⁰ _{-0.022}	115 ⁰ _{-0.022}
C	40 ^{-0.025} _{-0.050}	52 ^{-0.030} _{-0.060}	60 ^{-0.030} _{-0.060}	80 ^{-0.030} _{-0.060}	95 ^{-0.036} _{-0.071}	115 ^{-0.036} _{-0.071}
D	32	45	48	66	78	94
E	28	39	42	58	68	80
F	15.6	19.6	23.3	29.7	37.6	46.3
G	39.5	51.5	59.5	79.5	94.5	114.5
H	13	16	20	25	30	35
I	5	5	5	5	5	5
J	3	3	3	3	3	4
K	22 ^{+0.021} ₀	30 ^{+0.021} ₀	32 ^{+0.025} ₀	45 ^{+0.025} ₀	55 ^{+0.030} ₀	65 ^{+0.030} ₀
L	7	9	11	14	16	19
M	2	2.5	2.5	3	4	5
N	45°	30°	30°	30°	30°	30°
O	31	42	48	64	75	90
P	M5×0.8 depth 6	M5×0.8 depth 9	M6×1 depth 11	M8×1.25 depth 15	M10×1.5 depth 18	M12×1.75 depth 21
Q	8	12	12	12	12	12

Note 1. Be sure to match up phase of locate ring steel ball grooves and pallet clamp steel balls.

(mm)

Model	CPS-S03T	CPS-S06T	CPS-S10T	CPS-S16T	CPS-S25T	CPS-S40T
SA	39	51	59	79	94	114
SB	21	25	33	46	56	67
SC	2.05	3.05	3.05	3.05	4.05	4.05
SD	31	42	48	64	75	90
SE	6	6	7	9	11	14

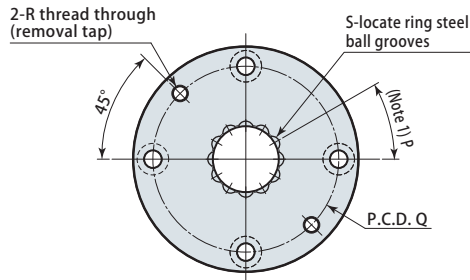
Note 1. This diagram indicates dimensions at shipping.

2. Adjust thickness of shim by grinding to ensure flatness of pallet.

Dimensions

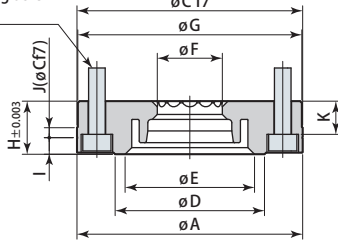
CPS-
D03
E06
F10
F16
F25
F40

Locate ring
(lower surface mounting)



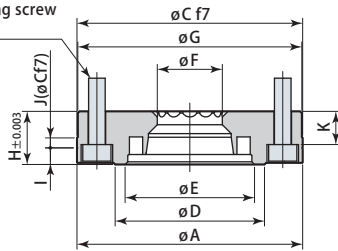
CPS-D03~16D Locate ring (D type)

Recommended mounting screw
(Note 2) 4-L



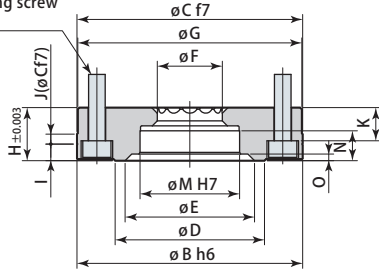
CPS-E03~40D Locate ring (E type)

Recommended mounting screw
(Note 2) 4-L



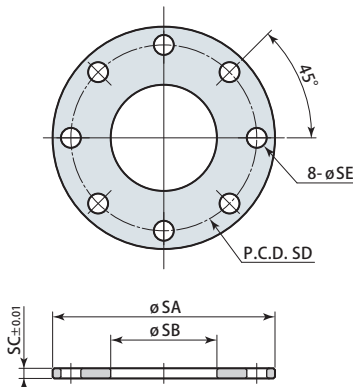
CPS-F03~40D Locate ring (F type)

Recommended mounting screw
(Note 2) 4-L



CPS-S
S03
S06
S10
S16
S25
S40

Shim (option)



(mm)

Model	CPS- ^D _F 03D	CPS- ^D _F 06D	CPS- ^D _F 10D	CPS- ^D _F 16D	CPS- ^E _F 25D	CPS- ^E _F 40D
A	55 ^{+0.006} _{-0.013}	68 ^{+0.006} _{-0.013}	75 ^{+0.006} _{-0.013}	100 ^{+0.007} _{-0.015}	120 ^{+0.007} _{-0.015}	140 ^{+0.007} _{-0.018}
B	55 ⁰ _{-0.019}	68 ⁰ _{-0.019}	75 ⁰ _{-0.019}	100 ⁰ _{-0.022}	120 ⁰ _{-0.022}	140 ⁰ _{-0.025}
C	55 ^{-0.030} _{-0.060}	68 ^{-0.030} _{-0.060}	75 ^{-0.030} _{-0.060}	100 ^{-0.036} _{-0.071}	120 ^{-0.036} _{-0.071}	140 ^{-0.043} _{-0.083}
D	32	45	48	66	78	94
E	28	39	42	58	68	80
F	15.6	19.6	23.3	29.7	37.6	46.3
G	54.5	67.5	74.5	99.5	119.5	139.5
H	13	16	20	25	30	35
I	5	5	5	5	5	5
J	3	3	3	3	3	3
K	7	10	13	16	19	22
L	M5×0.8 length 16	M5×0.8 length 20	M6×1 length 25	M8×1.25 length 35	M10×1.5 length 40	M12×1.75 length 45
M	22 ^{+0.021} ₀	30 ^{+0.021} ₀	32 ^{+0.025} ₀	45 ^{+0.025} ₀	55 ^{+0.030} ₀	65 ^{+0.030} ₀
N	7	9	11	14	16	19
O	2	2.5	2.5	3	4	5
P	45°	30°	30°	30°	30°	30°
Q	43	56	61	82	98	116
R	M5×0.8	M5×0.8	M6×1	M8×1.25	M10×1.5	M12×1.75
S	8	12	12	12	12	12

Note 1. Be sure to match up phase of locate ring steel ball grooves and pallet clamp steel balls.

2. Mounting screws are not included.

(mm)

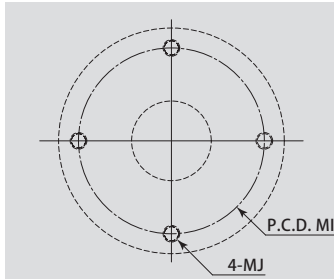
Model	CPS-S03D	CPS-S06D	CPS-S10D	CPS-S16D	CPS-S25D	CPS-S40D
SA	54	67	74	99	119	139
SB	24	32	39	55	65	77
SC	2.05	3.05	3.05	3.05	4.05	4.05
SD	43	56	61	82	98	116
SE	6	6	7	9	11	14

Note 1. This diagram indicates dimensions at shipping.

2. Adjust thickness of shim by grinding to ensure flatness of pallet.

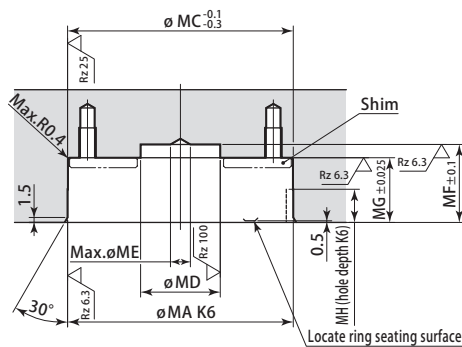
Dimensions

Mounting details



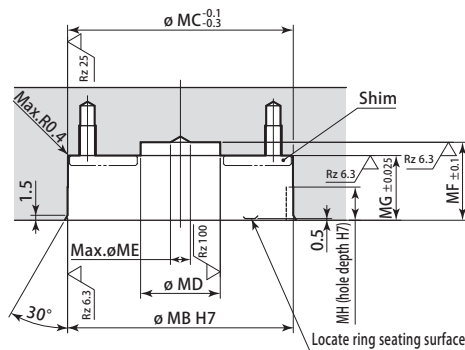
Mounting details

CPS-D03~16D, CPS-E03~40D



Mounting details

CPS-F03~40D



Rz: ISO4287(1997)

(mm)

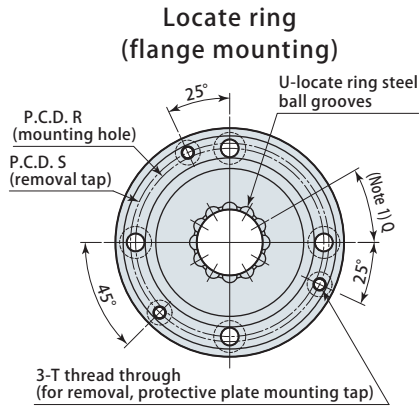
Model	CPS- $\frac{D}{E}$ 03D	CPS- $\frac{D}{E}$ 06D	CPS- $\frac{D}{E}$ 10D	CPS- $\frac{D}{E}$ 16D	CPS- $\frac{E}{F}$ 25D	CPS- $\frac{E}{F}$ 40D
MA	55 $\begin{smallmatrix} +0.004 \\ -0.015 \end{smallmatrix}$	68 $\begin{smallmatrix} +0.004 \\ -0.015 \end{smallmatrix}$	75 $\begin{smallmatrix} +0.004 \\ -0.015 \end{smallmatrix}$	100 $\begin{smallmatrix} +0.004 \\ -0.018 \end{smallmatrix}$	120 $\begin{smallmatrix} +0.004 \\ -0.018 \end{smallmatrix}$	140 $\begin{smallmatrix} +0.004 \\ -0.021 \end{smallmatrix}$
MB	55 $\begin{smallmatrix} +0.030 \\ 0 \end{smallmatrix}$	68 $\begin{smallmatrix} +0.030 \\ 0 \end{smallmatrix}$	75 $\begin{smallmatrix} +0.030 \\ 0 \end{smallmatrix}$	100 $\begin{smallmatrix} +0.035 \\ 0 \end{smallmatrix}$	120 $\begin{smallmatrix} +0.035 \\ 0 \end{smallmatrix}$	140 $\begin{smallmatrix} +0.035 \\ 0 \end{smallmatrix}$
MC	55	68	75	100	120	140
MD	20	24	26	34	50	60
ME	6	6	8	10	12	15
MF	20	23.5	26.8	34.8	41.8	48.8
MG	15.5	19.5	23.5	28.5	34.5	39.5
MH	10	10	10	10	10	10
MI	43	56	61	82	98	116
MJ	M5 depth 10	M5 depth 9	M6 depth 12	M8 depth 19	M10 depth 20	M12 depth 22

Note 1. Be sure to match up phase of locate ring steel ball grooves and pallet clamp steel balls.

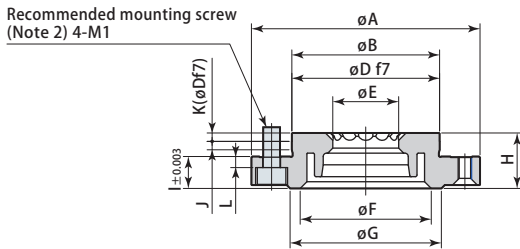
2. Dimensions are different from former pallet clamp (model CPC-□□F/CPH-□□F).

Dimensions

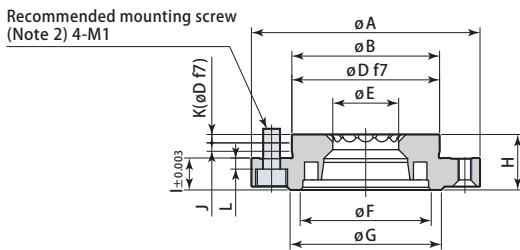
CPS-⁰³_D⁰⁶_E¹⁰_F¹⁶_F²⁵_F⁴⁰



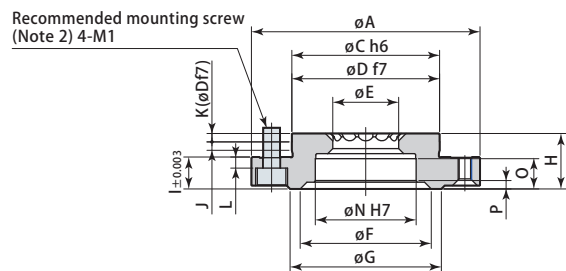
CPS-D03~16F Locate ring (D type)



CPS-E03~40F Locate ring (E type)

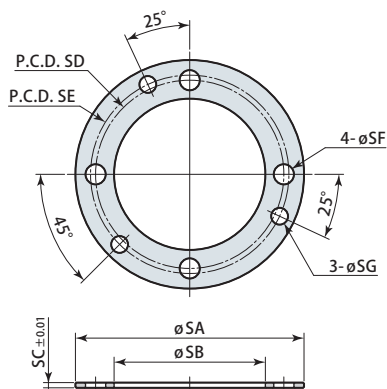


CPS-F03~40F Locate ring (F type)



CPS-S⁰³_F⁰⁶_F¹⁰_F¹⁶_F²⁵_F⁴⁰

Shim (option)



(mm)

Model	CPS- ^D _F 03F	CPS- ^D _F 06F	CPS- ^D _F 10F	CPS- ^D _F 16F	CPS- ^E _F 25F	CPS- ^E _F 40F
A	55	68	75	100	120	140
B	31 ^{+0.005} _{-0.011}	44 ^{+0.005} _{-0.011}	47 ^{+0.005} _{-0.011}	66 ^{+0.006} _{-0.013}	80 ^{+0.006} _{-0.013}	95 ^{+0.007} _{-0.015}
C	31 ⁰ _{-0.016}	44 ⁰ _{-0.016}	47 ⁰ _{-0.016}	66 ⁰ _{-0.019}	80 ⁰ _{-0.019}	95 ⁰ _{-0.022}
D	31 ^{-0.025} _{-0.050}	44 ^{-0.025} _{-0.050}	47 ^{-0.025} _{-0.050}	66 ^{-0.030} _{-0.060}	80 ^{-0.030} _{-0.060}	95 ^{-0.036} _{-0.071}
E	15.6	19.6	23.3	29.7	37.6	46.3
F	28	39	42	58	68	80
G	32	45	48	66	78	94
H	15.5	16.5	20	25	30	35
I	9	9.5	11.5	14.5	18	23
J	2.4	2.5	3.2	4.7	4.2	4.2
K	2.1	2.5	2.8	3.3	3.8	3.8
L	2.8	3.3	4.2	5.2	6.5	9.5
M1	M5×0.8 length 12	M5×0.8 length 12	M6×1 length 16	M8×1.25 length 20	M10×1.5 length 25	M12×1.75 length 30
M2	M5×0.8 length 12	M5×0.8 length 14	M6×1 length 16	M8×1.25 length 25	M10×1.5 length 25	M12×1.75 length 35
N	22 ^{+0.021} ₀	30 ^{+0.021} ₀	32 ^{+0.025} ₀	45 ^{+0.025} ₀	55 ^{+0.030} ₀	65 ^{+0.030} ₀
O	7	9	11	14	16	19
P	2	2.5	2.5	3	4	5
Q	45°	30°	30°	30°	30°	30°
R	43	56	61	82	98	116
S	46	59	64	88	106	124
T	M4×0.7	M4×0.7	M5×0.8	M5×0.8	M6×1	M6×1
U	8	12	12	12	12	12

Note 1. Be sure to match up phase of locate ring steel ball grooves and pallet clamp steel balls.

2. Mounting screws are not furnished.

3. Recommended mounting screw when using shims is M2.

(mm)

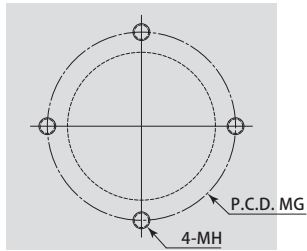
Model	CPS-S03F	CPS-S06F	CPS-S10F	CPS-S16F	CPS-S25F	CPS-S40F
SA	55	68	75	100	120	140
SB	32	45	48	67	81	96
SC	1.55	1.55	2.05	3.05	3.05	3.05
SD	43	56	61	82	98	116
SE	46	59	64	88	106	124
SF	6	6	7	9	11	14
SG	5	5	6	6	7	7

Note 1. This diagram indicates dimensions at shipping.

2. Adjust thickness of shim by grinding to ensure flatness of pallet.

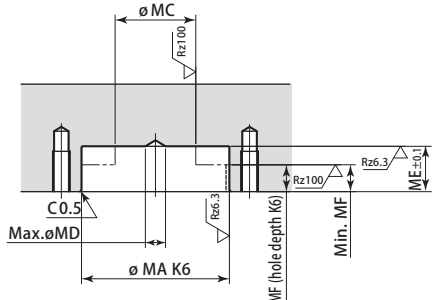
Dimensions

Mounting details



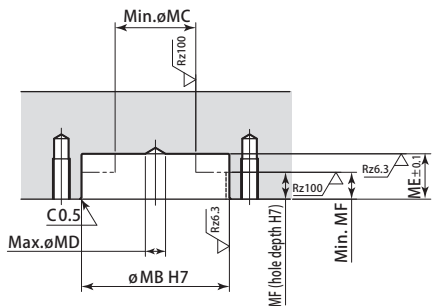
Mounting details

CPS-D03~16F, CPS-E03~40F



Mounting details

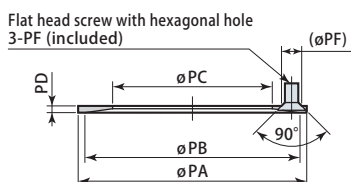
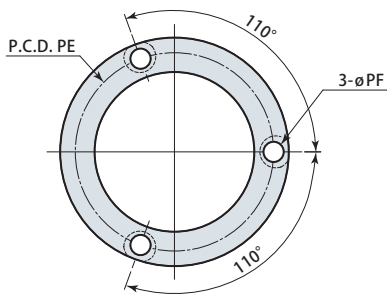
CPS-F03~40F



Rz: ISO4287(1997)

CPS-P F Protective plate (option)

03
06
10
16
25
40



(mm)

Model	CPS-D _F 03F	CPS-D _F 06F	CPS-D _F 10F	CPS-D _F 16F	CPS-E _F 25F	CPS-E _F 40F
MA	31 ^{+0.003} _{-0.013}	44 ^{+0.003} _{-0.013}	47 ^{+0.003} _{-0.013}	66 ^{+0.004} _{-0.015}	80 ^{+0.004} _{-0.015}	95 ^{+0.004} _{-0.018}
MB	31 ^{+0.025} ₀	44 ^{+0.025} ₀	47 ^{+0.025} ₀	66 ^{+0.030} ₀	80 ^{+0.030} ₀	95 ^{+0.035} ₀
MC	20	20	26	34	50	60
MD	6	6	8	10	12	15
MG	43	56	61	82	98	116

Standard specifications

ME	10.5	13.5	14.8	19.8	23.3	25.3
MF	7.5	8	9.5	11.5	13	13
MH	M5 depth 12	M5 depth 11	M6 depth 15	M8 depth 18	M10 depth 22	M12 depth 24

Shim specifications

ME	9	12	12.8	16.8	20.3	22.3
MF	6.5	6.5	7.5	8.5	10	10
MH	M5 depth 10	M5 depth 12	M6 depth 13	M8 depth 20	M10 depth 19	M12 depth 26

Note 1. Be sure to match up phase of locate ring steel ball grooves and pallet clamp steel balls.

2. Dimensions are different from former pallet clamp (model CPC-□□F/CPH-□□F).

(mm)

Model	CPS-P03F	CPS-P06F	CPS-P10F	CPS-P16F	CPS-P25F	CPS-P40F
PA	55	68	75	100	120	140
PB	51	64	68	94	114	132
PC	34.5	47.5	50.5	68.5	80.5	96.5
PD	2	2	2	2.5	3	3
PE	46	59	64	88	106	124
PF	6	6	8	8	9	9