

Rotary joint

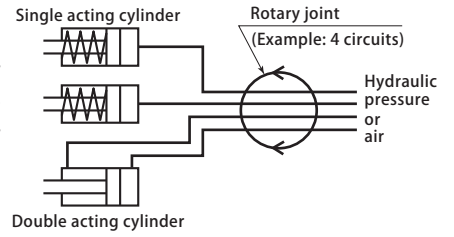
model **WRA**

Single rotary standard 25MPa



Rotary joints are best suited for supplying hydraulic pressure and air to rotary table of machining center on which use of secured hydraulic hoses or fixed piping is difficult. Standard single rotary can be selected from among four types of two-circuit to eight-circuit types, with each circuit usable as independent circuit.

When a four-circuit type is selected, for example, four single acting cylinders or two double acting cylinders can be controlled individually.

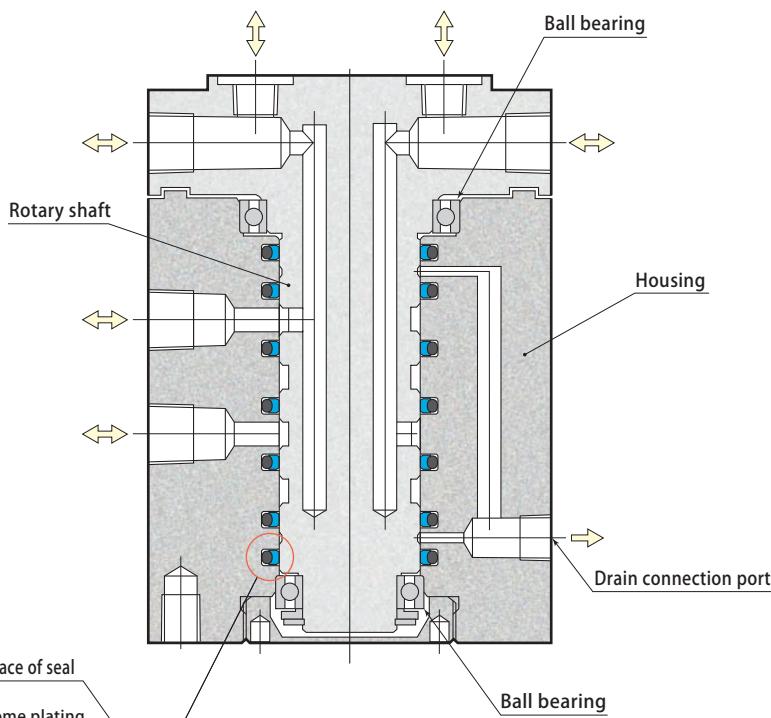


Low starting torque

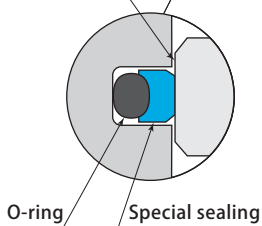
Special seal with lower resistance has been adopted to minimize sliding friction to realize low starting torque.

Usable for both oil and air

Superior sealing capability of special seal can be utilized not only for hydraulic circuits but also for air circuits.



Sliding surface of seal
 • Grinding
 • Hard chrome plating
 • Super-finish

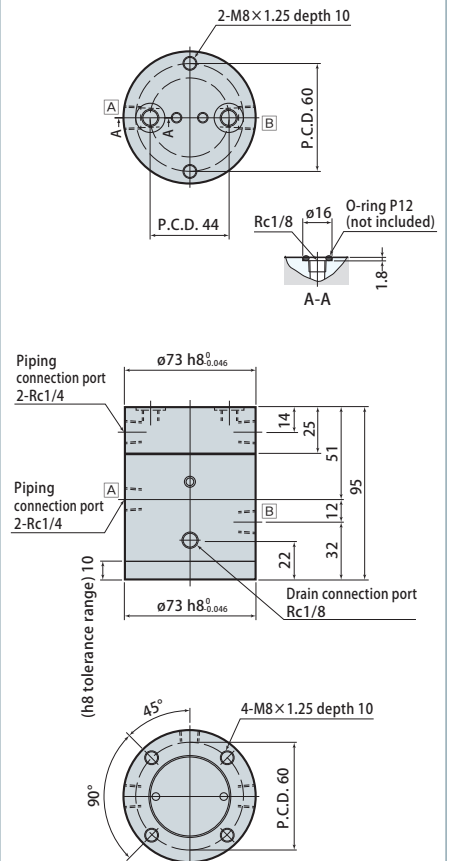


Superior seal performance and durability

Sliding surface is polished, hard chrome plated and then super-finished to offer superior seal performance and durability.

2 circuits

WRA2

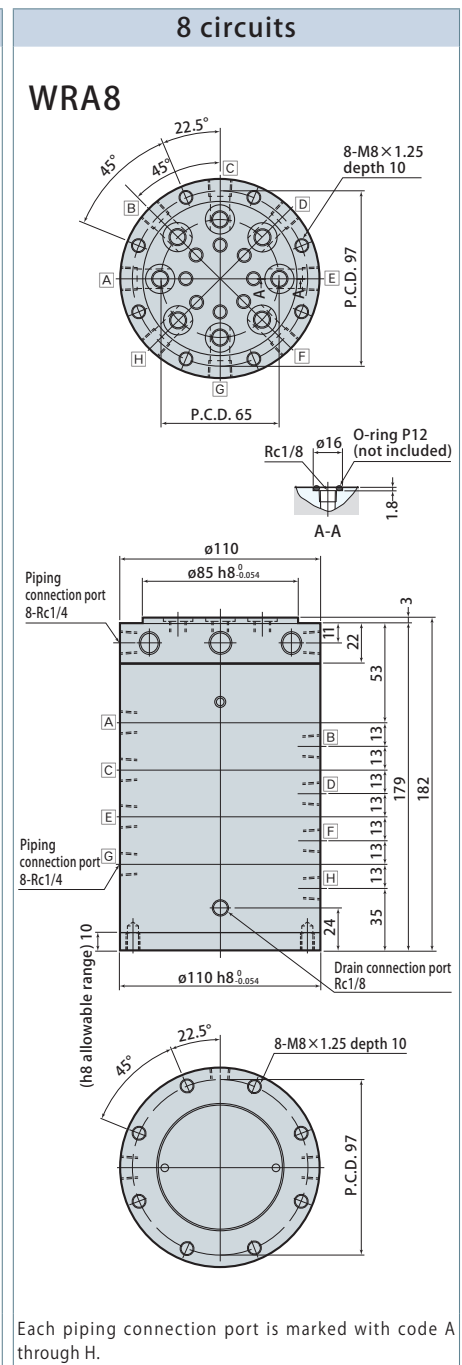
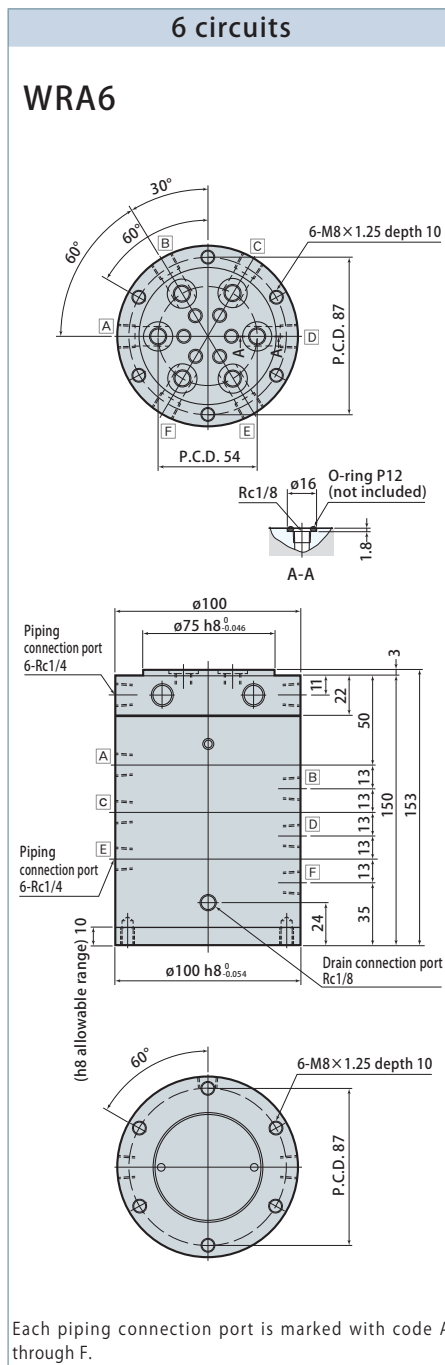
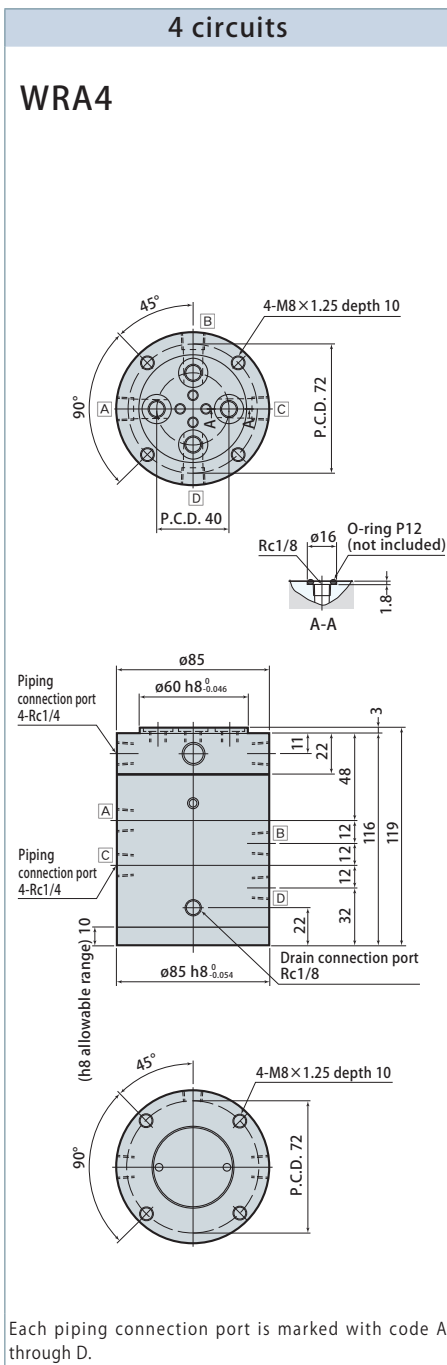


Each piping connection port is marked with code A or B.

Rotary joint

Specifications

Model	WRA2	WRA4	WRA6	WRA8
Number of circuits	2 circuits	4 circuits	6 circuits	8 circuits
Fluid used	General mineral based hydraulic oil (ISO-VG32 equivalent) or air			
Max. working pressure (MPa)	25			
Allowable rotations	Varies depending on fluid pressure (refer to page → 231 for details on allowable rotations.)			
Operating temperature (°C)	0 ~ 70			
Piping connection port dimensions	Rc1/4 (body upper surface is Rc1/8)			
Mass (kg)	3.0	5.0	8.9	12.9



Mounting screws are not included.