

Pascal control unit

model **HCS**

Control unit of die clamp for small die-casting machine



Pascal
corporation

www.pascaleng.co.jp

PAMPHLET PA-202E(3) REV.3 2008.03

Model designation

HCS ① – **G2** ② – ③

Ordering Example : HCS A–G2 SSS–FU

① Control Voltage (for Solenoid valve)

Symbol	Voltage
A	AC100V ※
D	DC24V

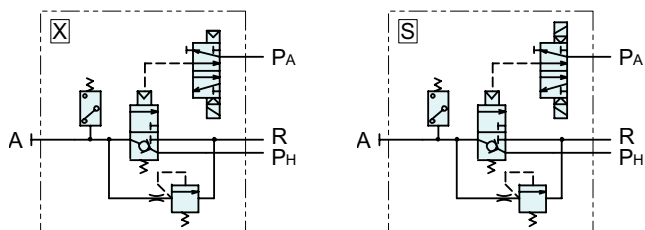
In case of other solenoid valve voltage, ask us separately.

※ : In case of AC voltage, no CE or UL compliance type is available.

② Hydraulic Circuits

Symbol	Circuit	Remark
X	Clamp	Single solenoid + relief valve
S	Clamp	Double solenoid + relief valve

For other circuit symbols, ask us separately.



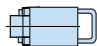
Pascal Pump Model

Symbol	Model	Working Pressure	Working Oil Type
G2	HPH6308G	24.5 MPa	Water glycol

For other working pressure than above and general working oil specification, ask us separately

③ Option Symbol

Symbol	Product name
F	Filter Regulator Specification
U	Oil pressure gauge for each circuit

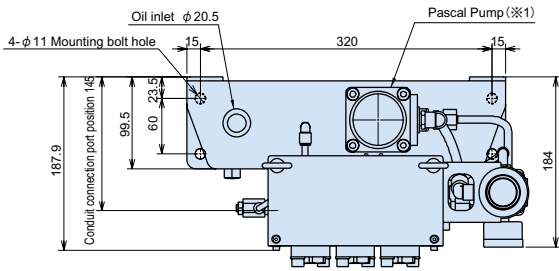
Number of Clamp circuit		Pascal pump Model x Quantity Working Clamp Model	Control Unit Model		Control Unit Model	
Top force clamp	Bottom force clamp		Solenoid valve control voltage AC100V		Solenoid valve control voltage DC24V	
			Single Solenoid	Double Solenoid	Single Solenoid	Double Solenoid
1	1	HPH6308G x 1 model TYB 	HCS A–G2 X	HCS A–G2 S	HCS D–G2 X	HCS D–G2 S
1	1		HCS A–G2 XX	HCS A–G2 SS	HCS D–G2 XX	HCS D–G2 SS
1	2		HCS A–G2 XXX	HCS A–G2 SSS	HCS D–G2 XXX	HCS D–G2 SSS
2	2		HCS A–G2 XXXX	HCS A–G2 SSSS	HCS D–G2 XXXX	HCS D–G2 SSSS

Specifications

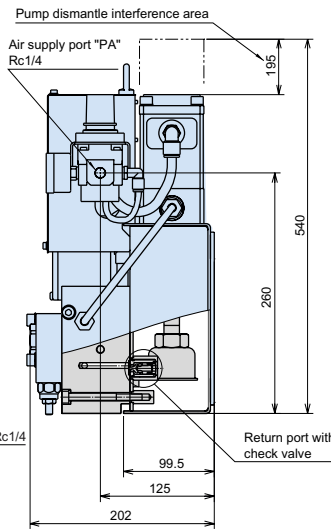
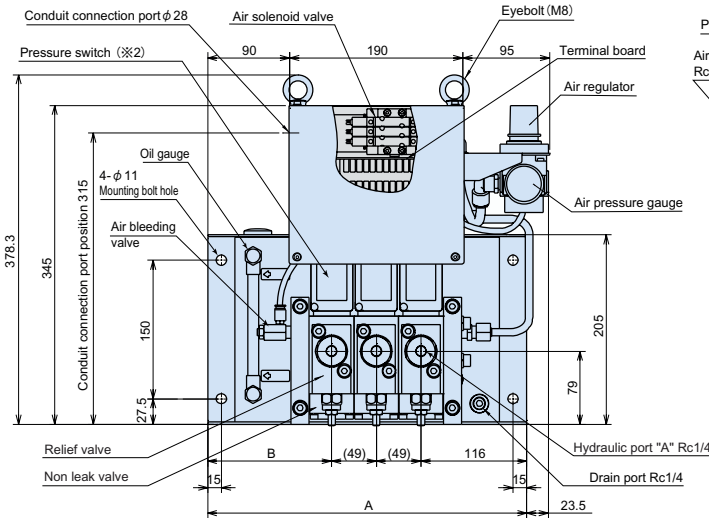
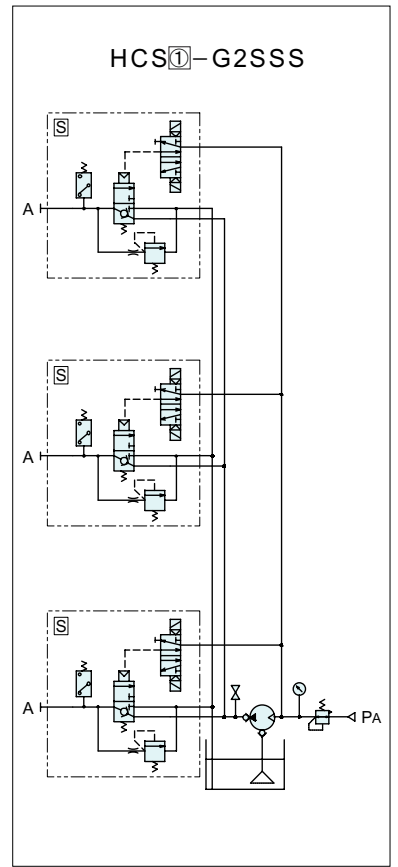
Model names	HCS ① –G2 ② – ③
Pump model × Quantity	HPH6308G × 1 unit
Discharge pressure	24.5 MPa
Driving air pressure	0.47 MPa
Discharge volume (at no load)	1.4 ℓ / min
Operating temperature	5 ~ 50 °C
Oil tank capacity	LOW-LEVEL 1.2 ℓ / HIGH-LEVEL 3.7 ℓ

For special specifications, ask us separately.

model HCS Dimensions



Circuit diagrams

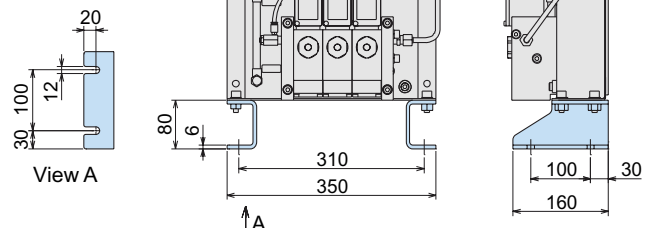
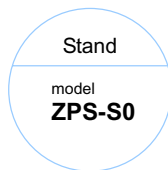
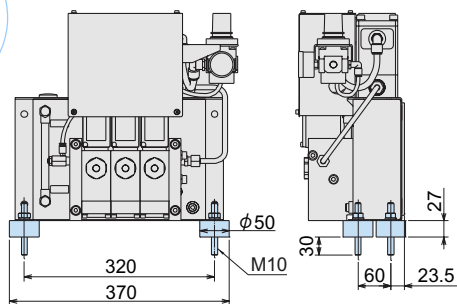
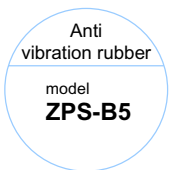


Number of Hydraulic circuit	A (mm)	B (mm)	Mass (kg)
1	350	234	18
2		185	22
3	400	136	26
4		137	30

- ※1 : Model HCS is equipped with only one pump.
In case requiring two pumps, please choose model HCM.
- ※2 : In case requiring the signal for excessive high pressure, please refer to model HCM. (Cannot be used with digital pressure gauge)
- ※3 : For 5 or more hydraulic circuits application, please choose model HCM.

Drawings shown here are for 1 to 3 hydraulic circuits. For 4 circuits application, ask us for details.

Accessories for Unit (Option)



Pascal

corporation

Itami, Hyogo, Japan 664-8502
TEL.(072)777-3333 FAX.(072)777-3520



CERTIFICATE OF APPROVAL ISO9001