

Pascal non-leak valve

model **VSB** Solenoid operated

Features

*Special non-leak design positively retains pressure for weeks, even if the air supply is cut off.

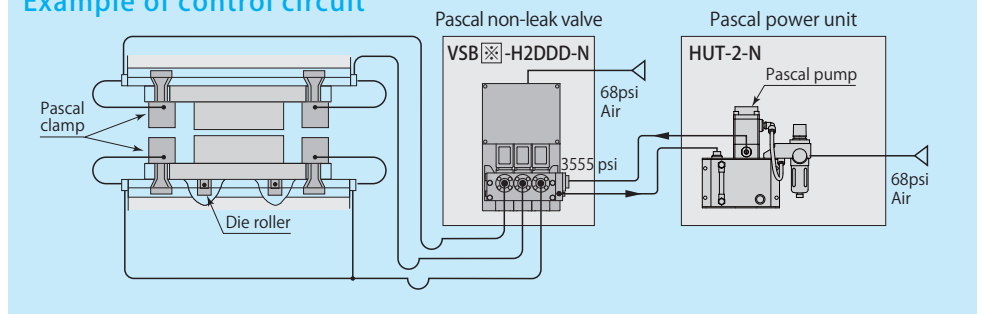
*Each valve has an incorporated pressure switch to shut down the press in case of accidental pressure loss, ensuring that the press can not be operated except under the rated pressure.

*Model D for the clamp and model F for the die lifter can be electrically interlocked to prevent operational errors.

*Electrically operated air-solenoid valve facilitates a remote control or easy pushbutton control.



Example of control circuit



Model and specifications

Model	VSB [] -H2 [] -N : NPT port	
Standard working pressure	3555 psi	
Maximum working pressure	4480 psi (Pilot air pressure 71 psi)	
Set pressure of pressure switch	Clamp circuit	INC. 2130 psi
	Die lifter circuit	DEC. 284 psi
Orifice diameter	(PH→A) 0.0195 in ² (A→R) 0.0456 in ²	

■ Fluid used : General mineral based hydraulic oil (ISO-VG32 equivalent) ■ Working temperature range : 41~122 °F

※ Electrical power voltage shall be specified as per the following classifications.

	Electrical power voltage
A	AC100V
B	AC200V
C	AC110V
D	DC 24V
E	AC220V

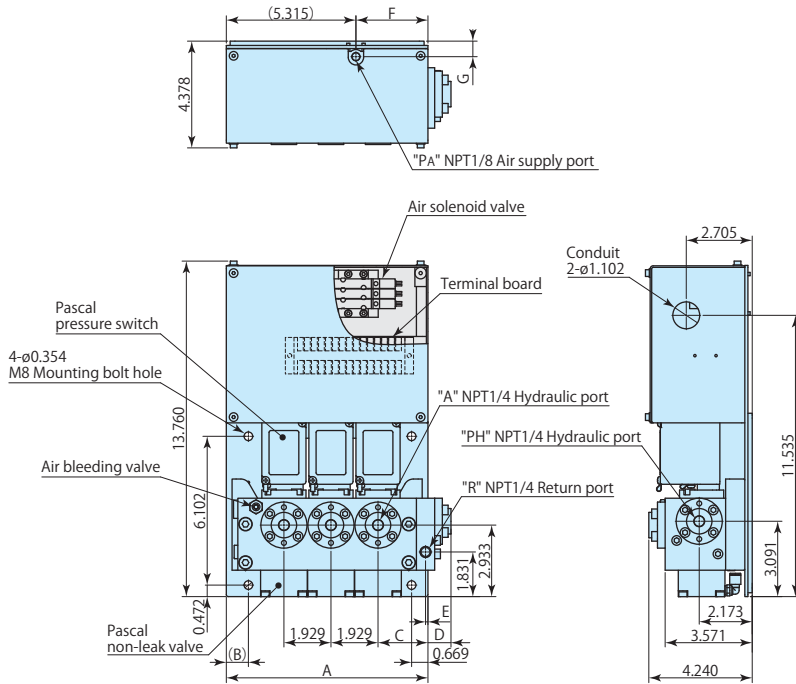
	Hydraulic circuit specifications	Symbol
Clamp	Single solenoid	D
	Double solenoid	L
Die lifter	Single solenoid	F
	Double solenoid	J

Upper clamp	Lower clamp	Die lifter	Solenoid valve	
			Single solenoid	Double solenoid
1	1	—	VSB [] - H2 D - N	VSB [] - H2 L - N
1	1	—	VSB [] - H2 DD - N	VSB [] - H2 LL - N
2	1	—	VSB [] - H2 DDD - N	VSB [] - H2 LLL - N
2	2	—	VSB [] - H2 DDDD - N	VSB [] - H2 LLLL - N
1	1	1	VSB [] - H2 DDF - N	VSB [] - H2 LLJ - N
2	1	1	VSB [] - H2 DDDF - N	VSB [] - H2 LLLJ - N

Pascal non-leak valve

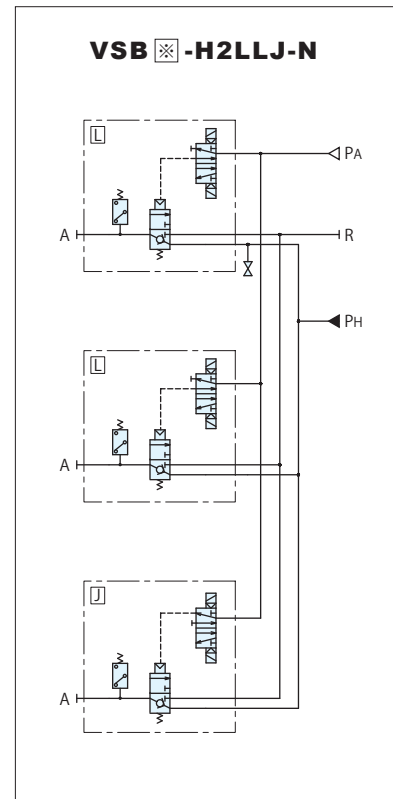
model **VSB**

Dimension (Unit : inch)



Number of hydraulic circuit	A (inch)	B (inch)	C (inch)	D (inch)	E (inch)	F (inch)	G (inch)	Mass (lbs)
1	4.528	0.709	2.126	0.866	0.177	2.264	0.965	17.6
2	6.299	0.906	2.047	0.945	0.098	2.165	0.638	24.3
3	8.268	0.906	2.047	0.945	0.098	2.953	0.638	32.0
4	10.236	0.906	2.047	0.945	0.098	2.953	0.638	38.6

Circuit diagrams



Circuit symbols

