

# PASCAL<sup>®</sup> CONTROL UNIT

# HCP

MODEL PNEUMATIC HYDRAULIC POWER CONTROL UNIT

## FEATURES:

Pascal control unit model HCP is a power pack unit consisting of Pascal pump and air solenoid operated non-leak valve with oil tank. Single or twin pump type of HCP is available depending on the cylinder oil volume, which is ideal for mid and large size of press machine.



## MODEL AND SPECIFICATIONS (HCP ☒ - pump circuit symbol - option symbol )

Model	HCP ☒ -2	HCP ☒ -22
Pump (quantity)	HPH6308(Single)	HPH6308(Twin)
Discharge pressure	24.5 MPa	
Set air pressure	0.47 MPa	
Discharge oil volume (at no load)	1.4 L / min.	2.8 L / min.
Tank capacity	HIGH-LEVEL 5.7 L / LOW-LEVEL 1.6 L	
Examples of Pascal clamps	TXA16 × 8 / TYA16 × 8	TXA25 × 8 / TYA25 × 8

- Fluid used : ISO VG32 equivalent mineral oil ■ Working temperature range : 5~50 °C
- Standard working pressure : 24.5 MPa ■ Maximum working pressure : 30.8 MPa (Pilot air pressure 0.49 MPa)
- Orifice diameter: (PH→A) 12.6 mm<sup>2</sup> (A→R) 29.4 mm<sup>2</sup>
- Air consumption rate : MAX.0.4 Nm<sup>3</sup>/min (pump 1 unit) MAX.0.8 Nm<sup>3</sup>/min (pump 2 units)
- Set pressure of pressure switch : Clamp circuit··INC. 14.7 MPa Die lifter circuit··DEC. 1.96 MPa

☒ Electrical power voltage shall be specified as per the following classifications.

		Hydraulic circuit specifications	Symbol	
A	AC100V	Clamp	Single solenoid	D
B	AC200V		Double solenoid	L
C	AC110V	Die lifter	Single solenoid	F
D	DC 24V		Double solenoid	J
E	AC220V			

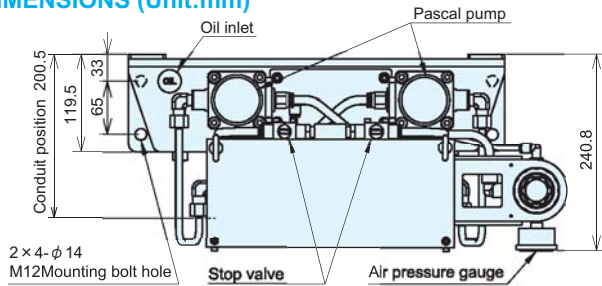
Upper clamp	Lower clamp	Die lifter	Pascal pump Model X quantity	Solenoid valve	
				Single solenoid	Double solenoid
1	1	—	HPH6308 x 1	HCP ☒ - 2 DD	HCP ☒ - 2 LL
2	1	—		HCP ☒ - 2 DDD	HCP ☒ - 2 LLL
2	2	—		HCP ☒ - 2 DDDD	HCP ☒ - 2 LLLL
1	1	—	HPH6308 x 2	HCP ☒ - 22 DD	HCP ☒ - 22 LL
2	1	—		HCP ☒ - 22 DDD	HCP ☒ - 22 LLL
2	2	—		HCP ☒ - 22 DDDD	HCP ☒ - 22 LLLL
1	1	1	HPH6308 x 1	HCP ☒ - 2 DDF	HCP ☒ - 2 LLJ
2	1	1		HCP ☒ - 2 DDDF	HCP ☒ - 2 LLLJ
1	1	1	HPH6308 x 2	HCP ☒ - 22 DDF	HCP ☒ - 22 LLJ
2	1	1		HCP ☒ - 22 DDDF	HCP ☒ - 22 LLLJ

# PASCAL<sup>®</sup> CONTROL UNIT

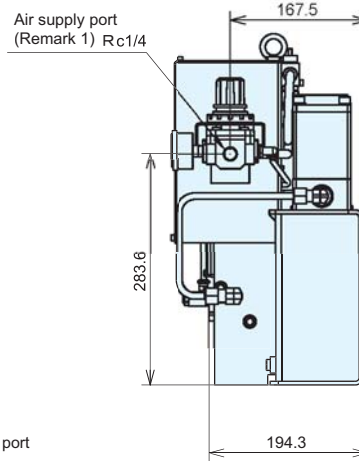
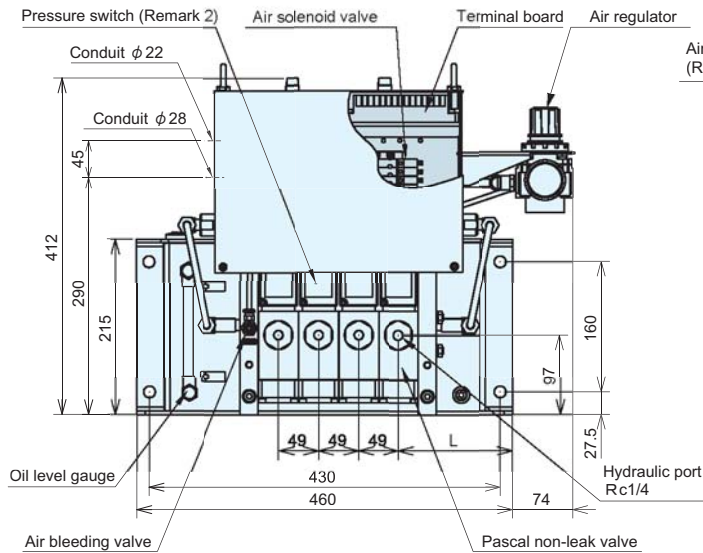
# HCP

MODEL

## DIMENSIONS (Unit:mm)



Drawing shown here is for 1 to 4 hydraulic circuits.  
For 5 or more circuits application, ask us for details.



Number of hydraulic circuit	1	2	3	4
L (mm)	213	188.5	164	139.5
Mass (kg)※	27	30	32	35

※: For the case of single pump (without oil). 3 kg to be added in case of twin pump.

Remark 1 : Piping diameter for single pump (Rc3/8 in case of twin pump).

Remark 2 : When a signal of abnormal high pressure detection is required, the other model called HCM should be applied.

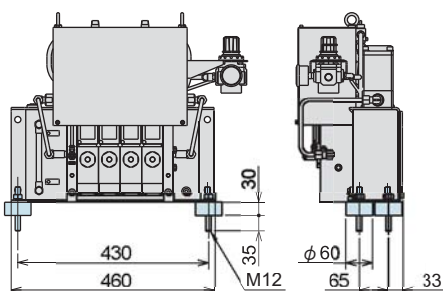
Option	Symbol
Filter regulator	F
Low oil level detection switch	L
2 station air double solenoid valve for slider	T
Pressure gauge at each circuit	U

For the details of hydraulic circuit and options, ask for brochures separately available.

## ACCESSORIES FOR CONTROLL UNIT (OPTION)

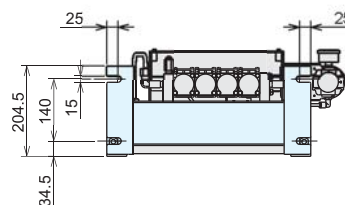
### Antivibration Rubber

MODEL ZPS-B5



### Stand

MODEL ZPS-S4



View A

