

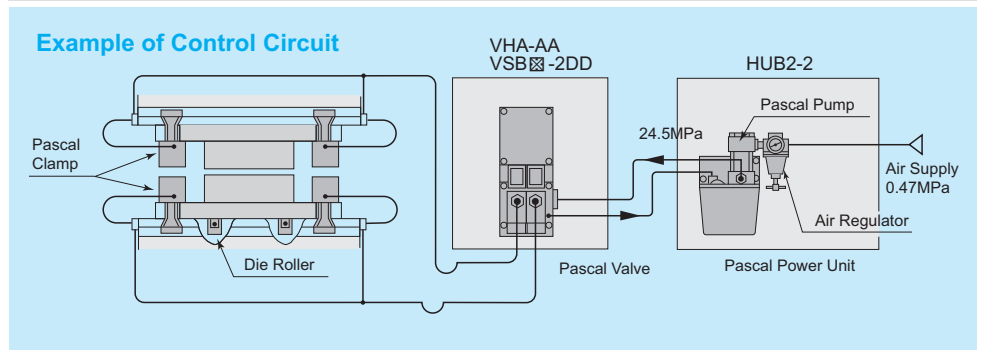
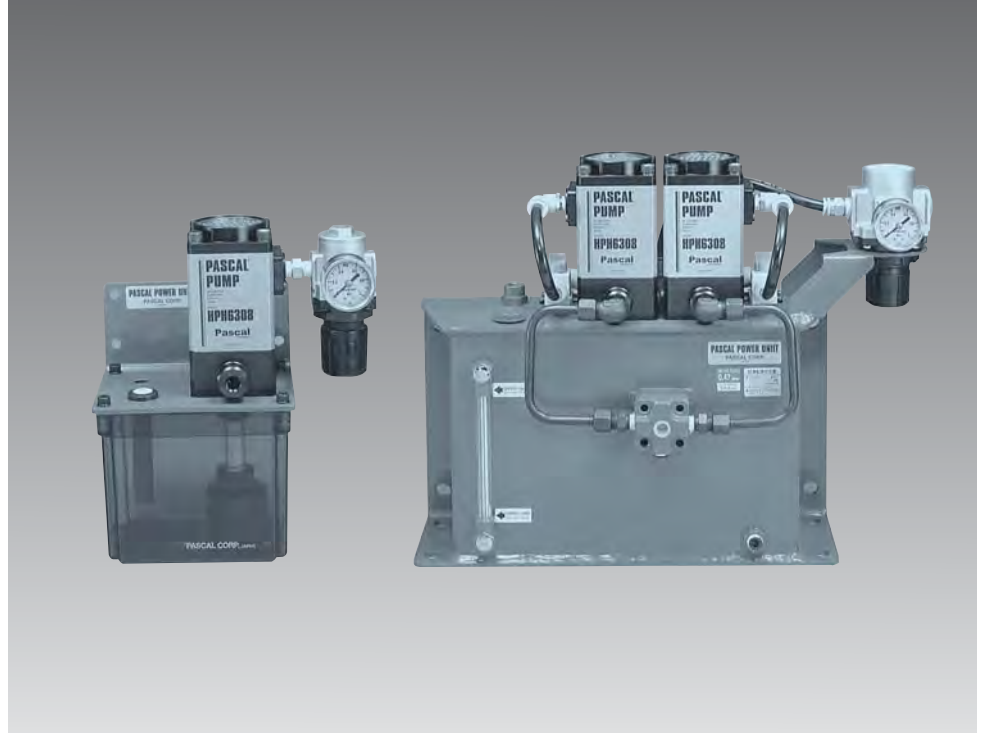
PASCAL® POWER UNIT

HUB HUC

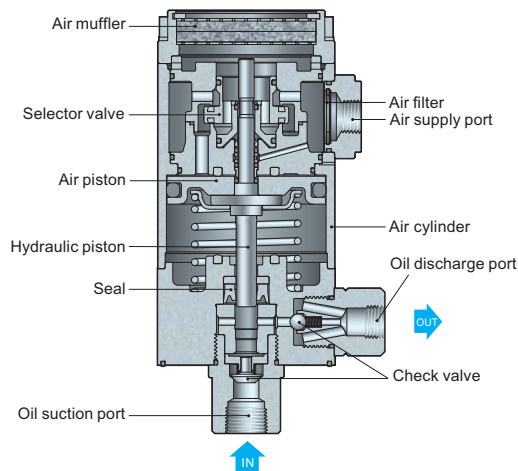
MODEL PNEUMATIC-HYDRAULIC POWER UNIT

FEATURES:

- * This high-performance, compact PASCAL power unit can generate high hydraulic pressure from compressed air. The air/hydraulic balance design maintains a constant pressure without consuming any energy. Once pressure is lost, the unit immediately responds to pump up the pressure to the designated level. Also, the sound of the pumps can warn the operator of oil leakage in the circuit.
- * As opposed to a booster (intensifier), the volume of oil displaced is not limited to a single stroke, but continuously supplied until the oil pressure reaches the rated level, which makes the HUB series ideal for a wide range of clamping applications. Large or small tank is available on standard models.
- * The twin-pump model can provide a large volume of oil quickly.
- * Discharging hydraulic pressure can be adjusted by controlling the air pressure. Ask us for details to fit your needs.



STRUCTURE OF PASCAL PUMP



MODEL AND SPECIFICATIONS

(HUB 2 - [pump] - [option symbol])
(HUC 2 - [pump] - [option symbol])

Model	HUB2-2	HUC-2	HUC-22
Pascal pump model	HPH 6308	HPH 6308 (Single)	HPH 6308 (Twin)
Discharge pressure (set air pressure)	24.5MPa (0.47MPa)		
Discharge oil volume (at no load)	1.4 L / min.		2.8 L / min.
Maximum air consumption	0.4 Nm ³ /min.	0.4 Nm ³ /min.	0.8 Nm ³ /min.
Mass (without oil)	6 kg	14 kg	18 kg

- Fluid used : ISO VG32 equivalent mineral oil
- Working temperature range: 5~60°C

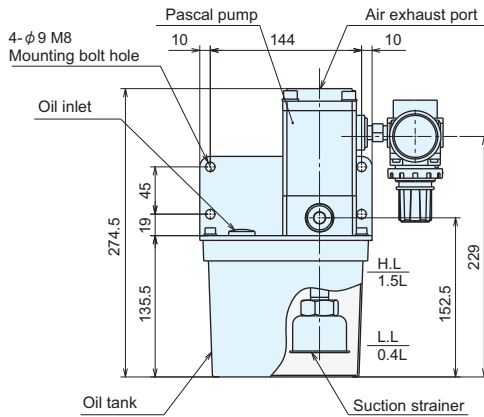
Option	Symbol
Filter regulator	F

PASCAL[®] POWER UNIT

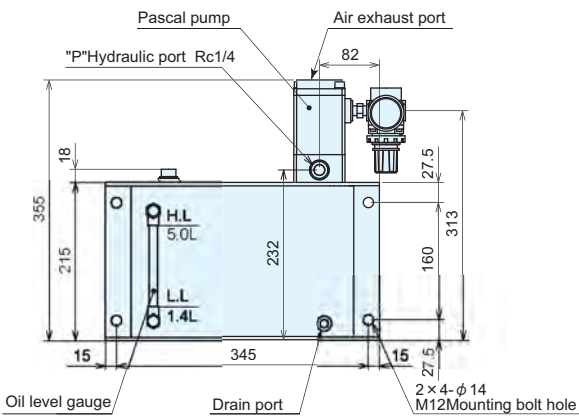
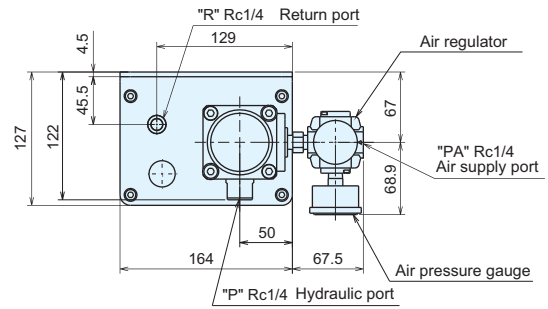
HUB HUC

MODEL

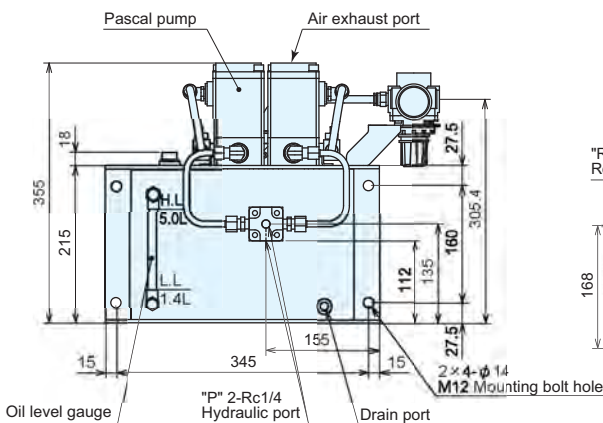
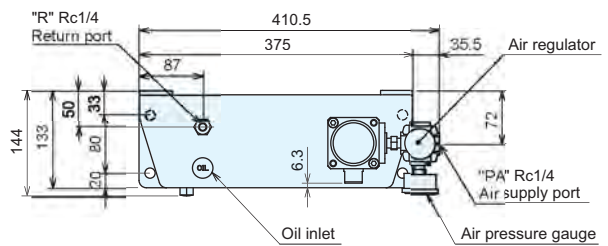
DIMENSIONS (Unit:mm)



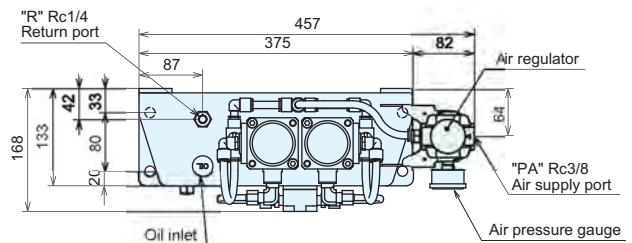
MODEL HUB2-2
(Small Tank • Single Pump)



MODEL HUC-2
(Large Tank • Single Pump)

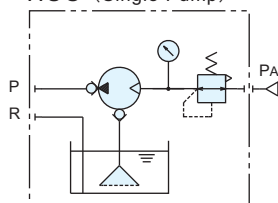


MODEL HUC-22
(Large Tank • Twin Pump)



CIRCUIT DIAGRAMS

HUB2
HUC (Single Pump)



HUC (Twin Pump)

