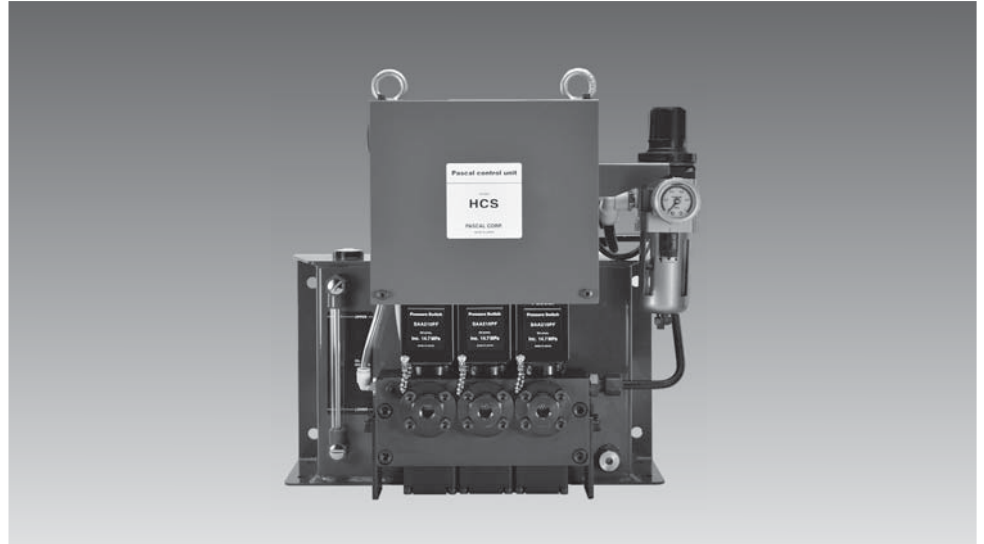


Pascal control unit

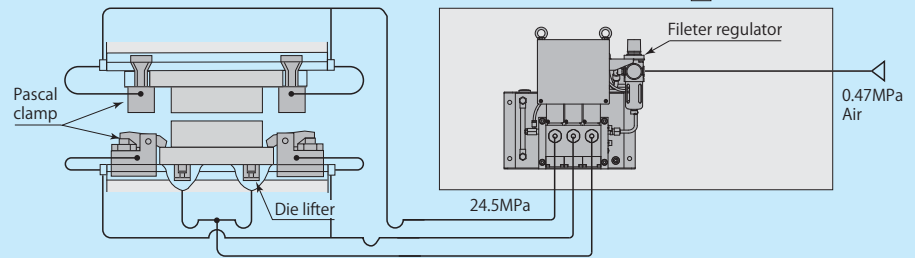
model **HCS** Pneumatic-hydraulic power control unit

Features

Pascal control unit model HCS is a power pack unit consisting of Pascal pump and air solenoid operated non-leak valve with oil tank. Its compact design can fit in limited space of the machine and it is suitable for small size of press machine as a power source of clamp system.



Example of control circuit



Model and specifications

Model	HCS [Symbol] -H2 [circuit symbol] - [option symbol]
Pascal pump model	HPX6308U-D
Discharge pressure	24.5 MPa
Set air pressure	0.47 MPa
Discharge oil volume (at no load)	1.6 L/min
Tank capacity	HIGH-LEVEL 3.5 L / LOW-LEVEL 1.5 L
Applicable examples of Pascal clamps	TXA10 x 8 / TYA10 x 8

- Fluid used : General mineral based hydraulic oil (ISO-VG32 equivalent) ■ Working temperature range : 5~50 °C
- Standard working pressure : 24.5 MPa ■ Maximum working pressure : 30.8 MPa (Pilot air pressure 0.49 MPa)
- Orifice diameter : (PH→A) 12.6 mm² (A→R) 29.4 mm² ■ Air consumption : Max.0.4 Nm³/min
- Set pressure of pressure switch : Clamp circuit···INC. 14.7 MPa Die lifter circuit···DEC. 1.96 MPa

※Electrical power voltage shall be specified as per the following classifications.

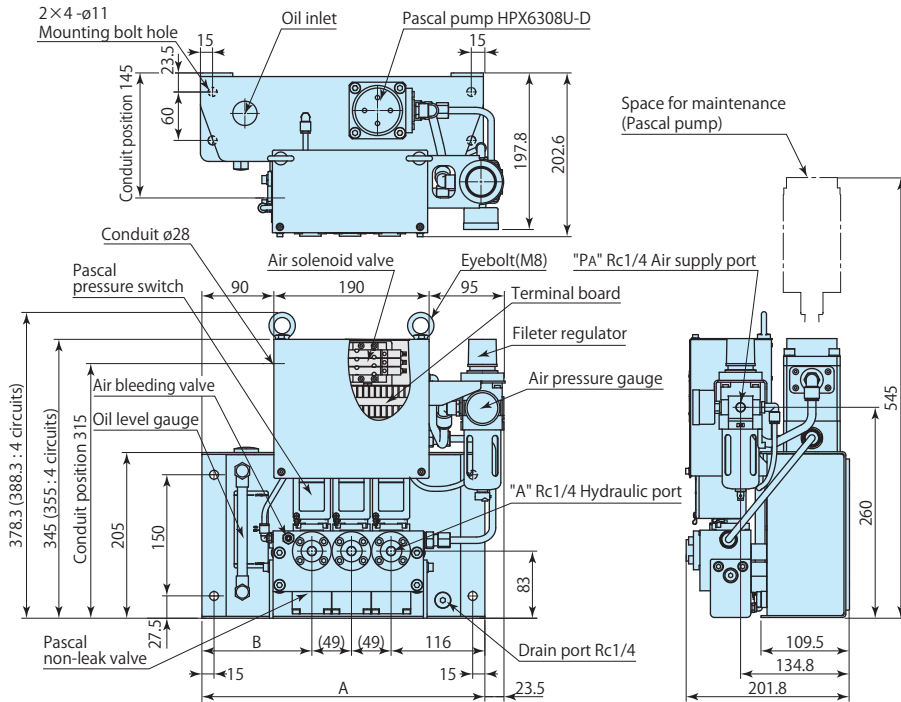
	Electrical power voltage	Hydraulic circuit specifications	Symbol	
A	AC100V	Clamp	Single solenoid	D
B	AC200V		Double solenoid	L
C	AC110V	Die lifter	Single solenoid	F
D	DC 24V		Double solenoid	J
E	AC220V			

Upper clamp	Lower clamp	Die lifter	Pascal pump Model x quantity	Solenoid valve	
				Single solenoid	Double solenoid
	1	—	HPX6308 x 1	HCS [Symbol] - H2 D	HCS [Symbol] - H2 L
1	1	—		HCS [Symbol] - H2 DD	HCS [Symbol] - H2 LL
2	1	—		HCS [Symbol] - H2 DDD	HCS [Symbol] - H2 LLL
2	2	—		HCS [Symbol] - H2 DDDD	HCS [Symbol] - H2 LLLL
1	1	1		HCS [Symbol] - H2 DDF	HCS [Symbol] - H2 LLJ
2	1	1		HCS [Symbol] - H2 DDDF	HCS [Symbol] - H2 LLLJ

Pascal control unit

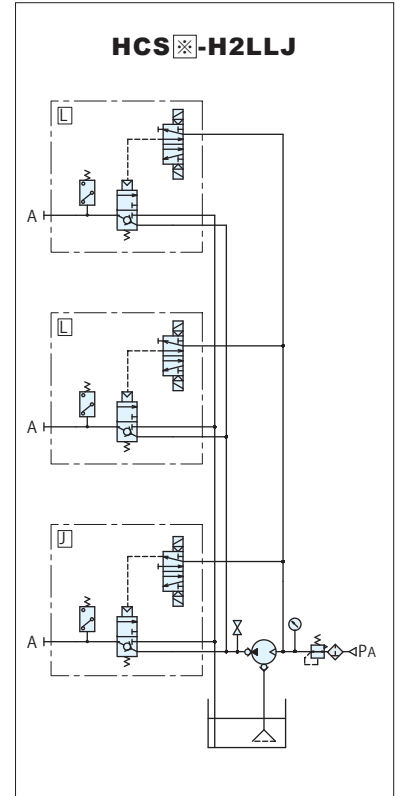
model **HCS**

Dimension (Unit : mm)



Number of hydraulic circuit	A (mm)	B (mm)	Mass (kg)
1	350	234	17
2	350	185	20
3	350	136	22
4	400	137	26

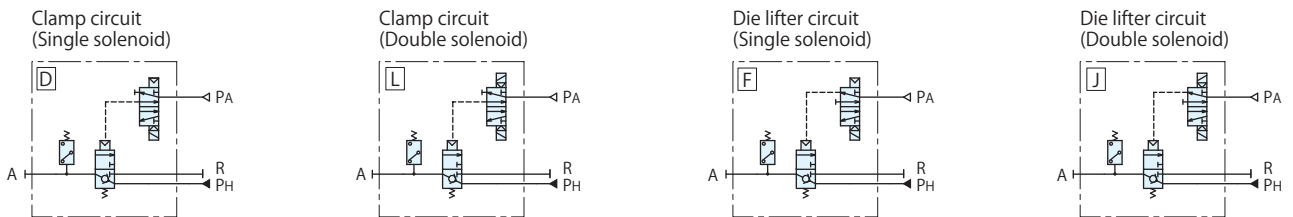
Circuit diagrams



Option	Symbol
Oil pressure gauge for each circuit	U

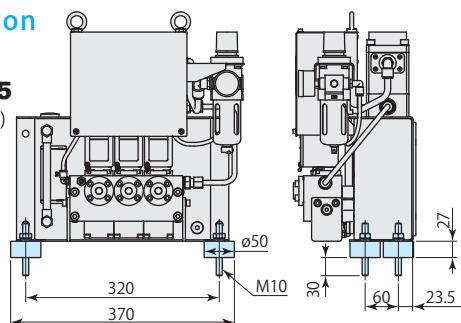
Refer to separate document for details the details of hydraulic circuit and option.

Circuit symbols



Antivibration rubber

model **ZPS-B5**
(Option 4 pieces)



Stand

model **ZPS-S0**
(Option)

