

Pascal non-leak valve

model **VSB** Solenoid operated

Features

*Special non-leak design positively retains pressure for weeks, even if the air supply is cut off.

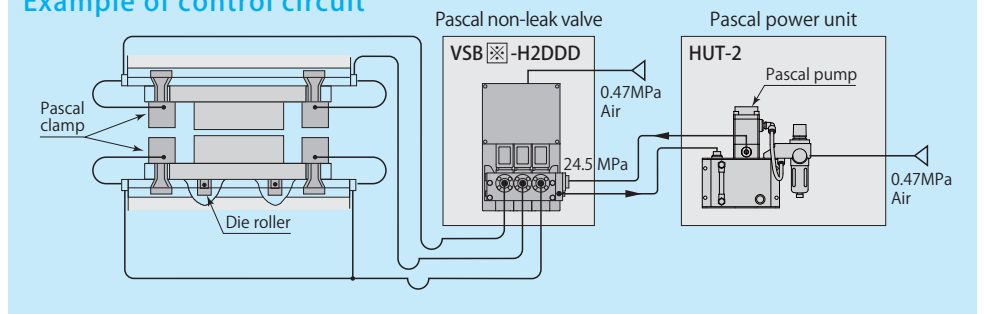
*Each valve has an incorporated pressure switch to shut down the press in case of accidental pressure loss, ensuring that the press can not be operated except under the rated pressure.

*Model D for the clamp and model F for the die lifter can be electrically interlocked to prevent operational errors.

*Electrically operated air-solenoid valve facilitates a remote control or easy pushbutton control.



Example of control circuit



Model and specifications

Model	VSB [Symbol] -H2 [circuit symbol]	
Standard working pressure	24.5 MPa	
Maximum working pressure	30.8 MPa (Pilot air pressure 0.49 MPa)	
Set pressure of pressure switch	Clamp circuit	INC. 14.7 MPa
	Die lifter circuit	DEC. 1.96 MPa
Orifice diameter	(PH→A) 12.6 mm ² (A→R) 29.4 mm ²	

■ Fluid used : General mineral based hydraulic oil (ISO-VG32 equivalent) ■ Working temperature range : 5~50 °C

※ Electrical power voltage shall be specified as per the following classifications.

Symbol	Electrical power voltage
A	AC100V
B	AC200V
C	AC110V
D	DC 24V
E	AC220V

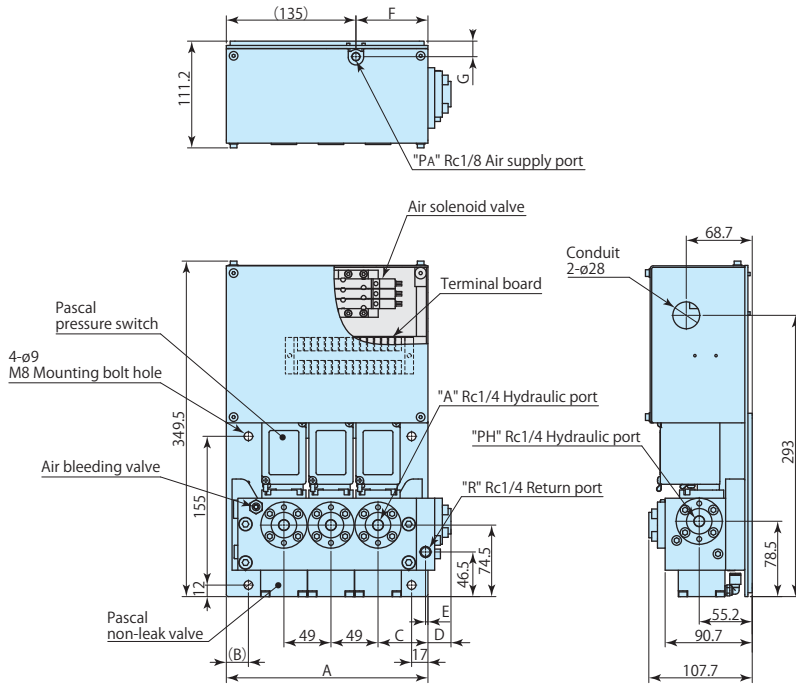
Hydraulic circuit specifications		Symbol
Clamp	Single solenoid	D
	Double solenoid	L
Die lifter	Single solenoid	F
	Double solenoid	J

Upper clamp	Lower clamp	Die lifter	Solenoid valve	
			Single solenoid	Double solenoid
1	1	—	VSB [Symbol] - H2 D	VSB [Symbol] - H2 L
1	1	—	VSB [Symbol] - H2 DD	VSB [Symbol] - H2 LL
2	1	—	VSB [Symbol] - H2 DDD	VSB [Symbol] - H2 LLL
2	2	—	VSB [Symbol] - H2 DDDD	VSB [Symbol] - H2 LLLL
1	1	1	VSB [Symbol] - H2 DDF	VSB [Symbol] - H2 LLJ
2	1	1	VSB [Symbol] - H2 DDDF	VSB [Symbol] - H2 LLJJ

Pascal non-leak valve

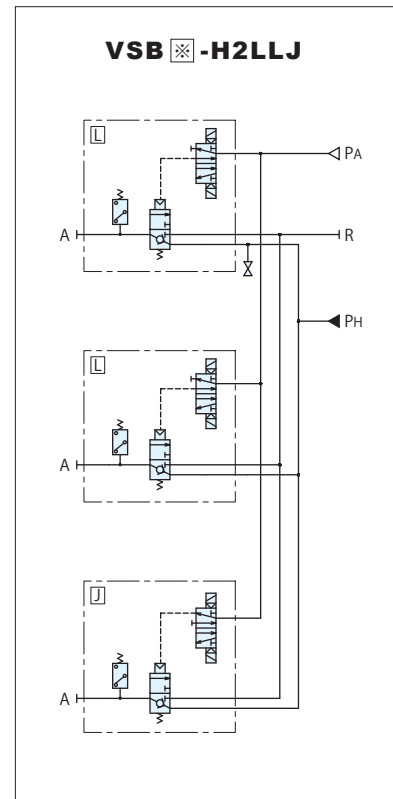
model **VSB**

Dimension (Unit : mm)



Number of hydraulic circuit	A (mm)	B (mm)	C (mm)	D (mm)	E (mm)	F (mm)	G (mm)	Mass (kg)
1	115	18	54	22	4.5	57.5	24.5	8
2	160	23	52	24	2.5	55	16.2	11
3	210	23	52	24	2.5	75	16.2	14.5
4	260	23	52	24	2.5	75	16.2	17.5

Circuit diagrams



Circuit symbols

