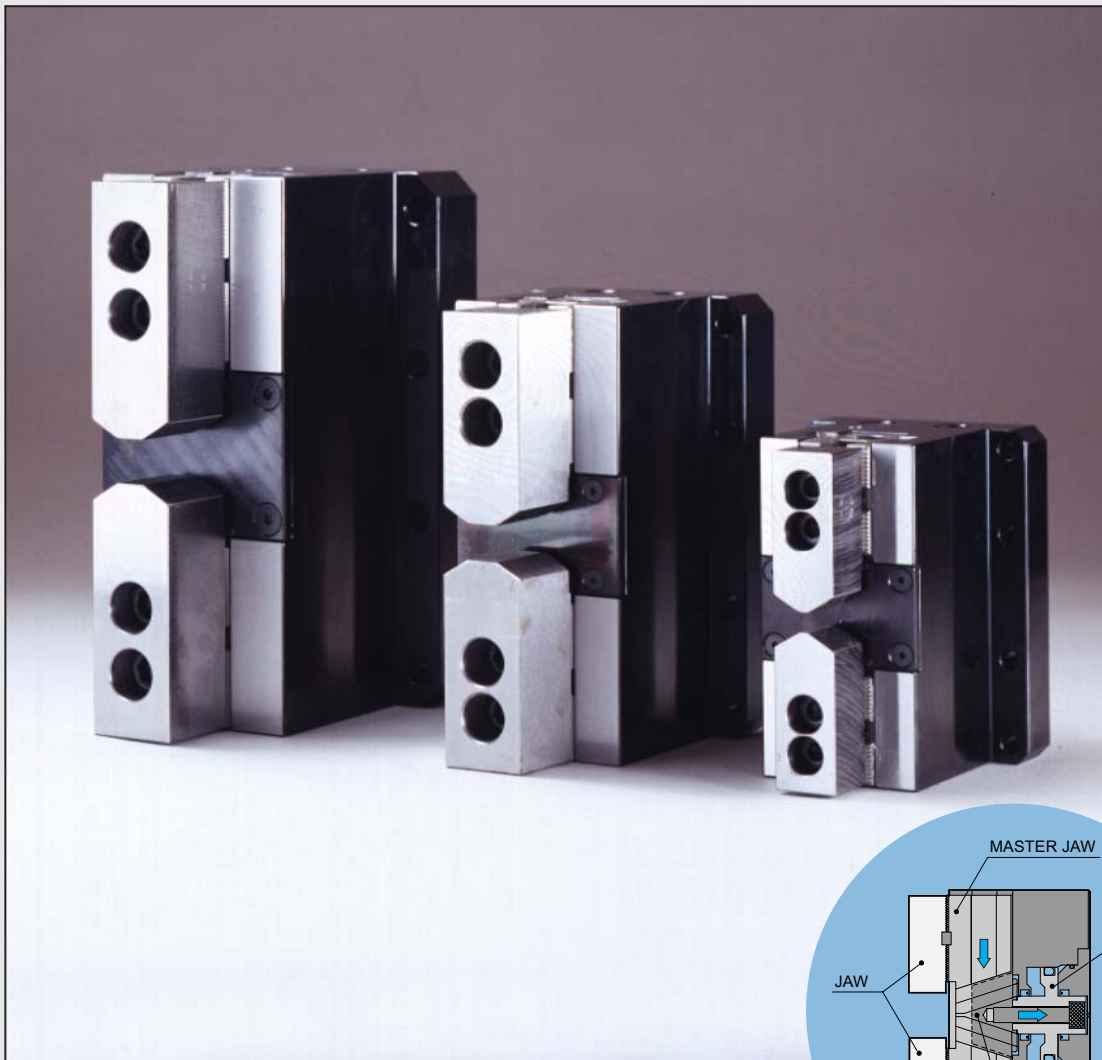


7MPa

# Hydraulic Centering Vise

model CVH



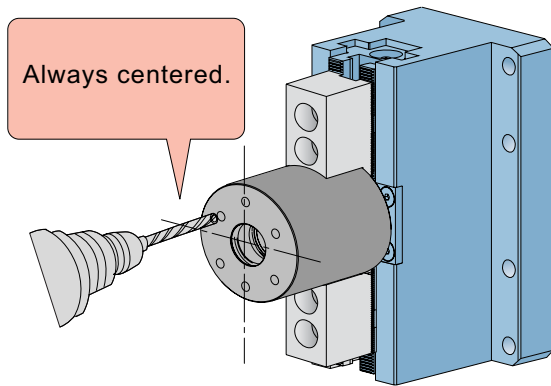
**Pascal**  
corporation

[www.pascaleng.co.jp](http://www.pascaleng.co.jp)

### Feature of Pascal Centering Vice

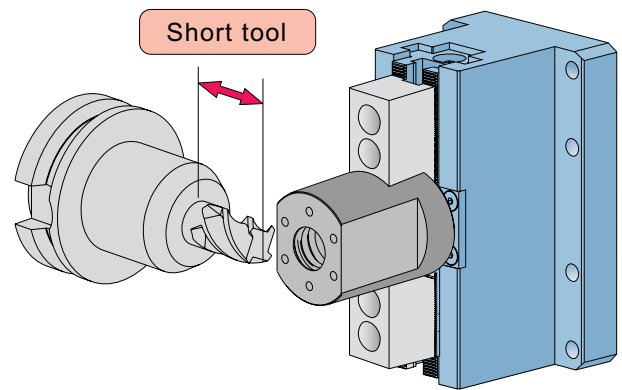
#### Precision centering

When clamped on a standard machinists vise, the center position can fluctuate due to part thickness variations, since one datum surface is fixed. With the Pascal centering vise, both jaws are equally centered during the clamping stroke, maintaining the piece part position centerline.



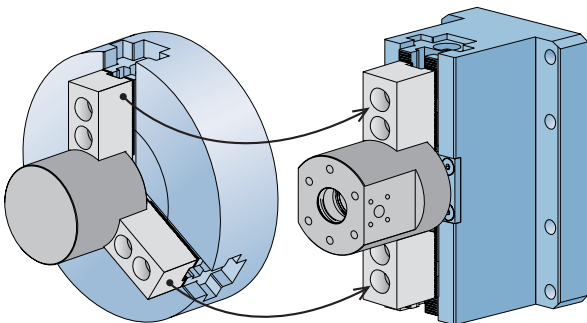
#### Superior Tool Accessibility

Pascal Centering Vice minimized the interference space, thus tool selection has become flexible to make better machining conditions.



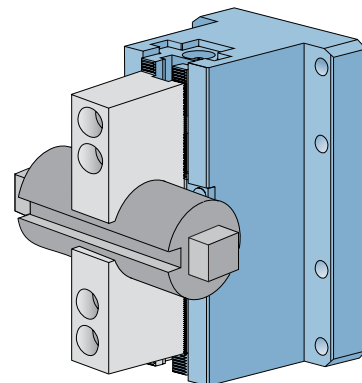
#### Soft Jaw common use with turning

Standard soft jaws from a turning center chuck be used on the Pascal centering vise. Many varieties are available from Pascal or commercial sources for quick and cost effective part holding.



#### For Diverse shape

One chuck machining for diverse shapes of work-piece by self-cut soft jaw.



## Specifications

Model		CVH04 (4 inch)	CVH06 (6 inch)	CVH08 (8 inch)
Clamping Force	(pressure at 7MPa)	10 kN	20 kN	30 kN
Maximum Working Pressure		7 MPa	7 MPa	7 MPa
Proof Pressure		10.5 MPa	10.5 MPa	10.5 MPa
Minimum Starting Pressure		1 MPa	1 MPa	1 MPa
Jaw Stroke (Diameter)		5.6 mm	5.8 mm	6.0 mm
Max. Grip O.D.		100 mm	145 mm	190 mm
Max. Grip I.D.		125 mm	170 mm	220 mm
Cylinder Capacity	Grip I.D. side	11.6 cm <sup>3</sup>	23.7 cm <sup>3</sup>	34.6 cm <sup>3</sup>
	Grip O.D. side	11.6 cm <sup>3</sup>	23.7 cm <sup>3</sup>	34.6 cm <sup>3</sup>
Mass		4.6 kg	8.3 kg	15.3 kg

## Class Definition CVH ① ②

① Size (Refer to specification table)

② Type of mounting and piping

CVH	① Size	② Type of mounting and piping
	04	G : Manifold mount
	06	S : Piping connection
	08	

## Dimensions

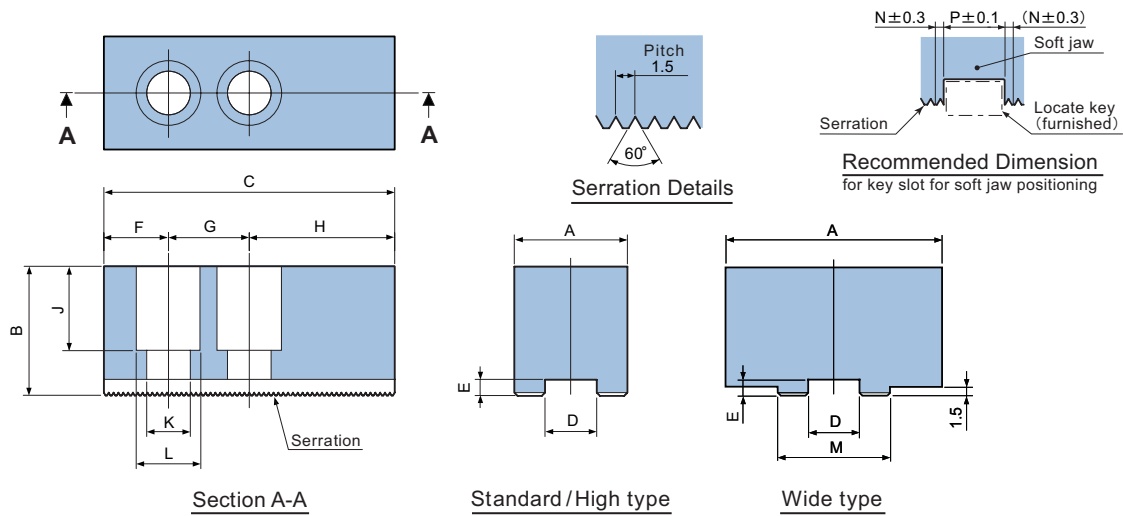
**Dimensions (mm)**

Model	CVH04	CVH06	CVH08
A	90	100	125
B	120	165	210
C	84.85	94.85	109.85
D	60	70	85
E	83	93	108
F	20	25	30
G	27	31	35
H	1.85	1.85	1.85
J	M 8	M 10	M 12
K1	30	30	35
K2	17	19	19
L	75	85	105
M1	45	65	60
M2	30	40	60
N1	38.6	44.2	64.9
N2	2.8	2.9	3.0
P1	44.2	50.0	70.9
P2	37.5	57.0	69.0
Q	6.8	9.0	11.0
R1	φ7.5	9.0	9.0
R2	15.0	24.0	30.0
R3	0.4	0.5	0.55
S	3.0	3.0	3.0
T	52.5	72.5	90.0
U	42.5	50.0	75.0
V	27.5	27.5	35
W	30	30	35
X	6	8	10
Y	9	12	15
a	10	12	14
b	15.5	18.5	21.5
c	6	8	10
d	10	12	13

※ Mounting bolts, Locate pins, Soft jaws and Jaw Nuts are not furnished.

## SOFT JAW DIMENSIONS model CVJ04 / CVJ06 / CVJ08 (OPTION)

※:Two jaws make a set.



Model	Type	A	B	C	D	E	F	G	H	J	K	L	M	N	P
CVJ04-N	Standard	23	25							16			—		
CVJ04-H	High	23	48	55	10	4	13	14	28	39	8.5	13.5	—	0.8	8.9
CVJ04-W	Wide	60	25							16			23		

Mounting bolt size for CVJ04 : M8 × 20L (not furnished)

Model	Type	A	B	C	D	E	F	G	H	J	K	L	M	N	P
CVJ06-N	Standard	31	32							20			—		
CVJ06-H	High	31	66	72	12	5	15	20	37	54	11	17	—	0.8	10.4
CVJ06-W	Wide	70	32							20			31		

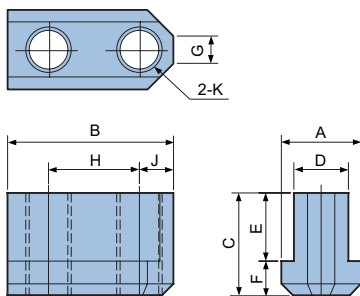
Mounting bolt size for CVJ06 : M10 × 30L (not furnished)

Model	Type	A	B	C	D	E	F	G	H	J	K	L	M	N	P
CVJ08-N	Standard	35	38							23			—		
CVJ08-H	High	35	76	95	14	5	24	25	46	61	13	19	—	0.8	10.4
CVJ08-W	Wide	85	38							23			35		

Mounting bolt size for CVJ08 : M12 × 35L (not furnished)

## JAW NUT DIMENSIONS model CVJ04-T / CVJ06-T / CVJ08-T (OPTION)

※:Two jaw nuts make a set.



Model	A	B	C	D	E	F	G	H	J	K
CVJ04-T	15	28	18	10	12.5	5.5	5	14	7	M8
CVJ06-T	17.5	36.5	22.5	12	15	7.5	6	20	7.5	M10
CVJ08-T	20.5	48	25.5	14	16	9.5	8	25	11	M12

Specifications are subject to change without prior notice.

CLS-17E-2 2006.05