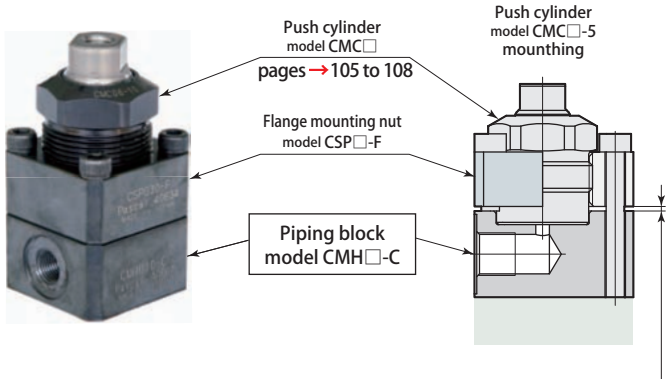


Piping block

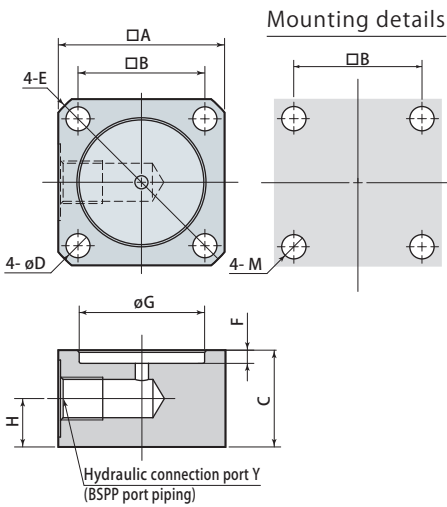


**CMH** <sup>①</sup>-C (Example: CMH016-C)

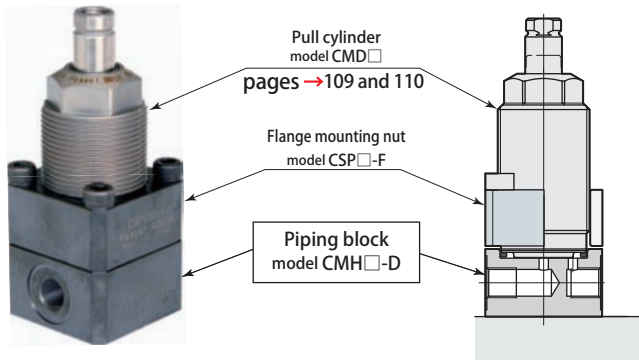
① Size

<b>CMH</b>	016 : For CMC01	- C : Piping block
	022 : For CMC03	
	025 : For CMC04	
	030 : For CMC06	
	036 : For CMC10	
	048 : For CMC20	
	055 : For CMC25	
	065 : For CMC40	
080 : For CMC60		

When using the flange mounting nut with model CMC03-5, CMC04-5, CMC06-5 or CMC10-5.  
 ① Mount CMC onto the flange mounting nut. ② Tighten the mounting screws.  
 (providing a clearance between the flange mounting nut and the mounting surface)



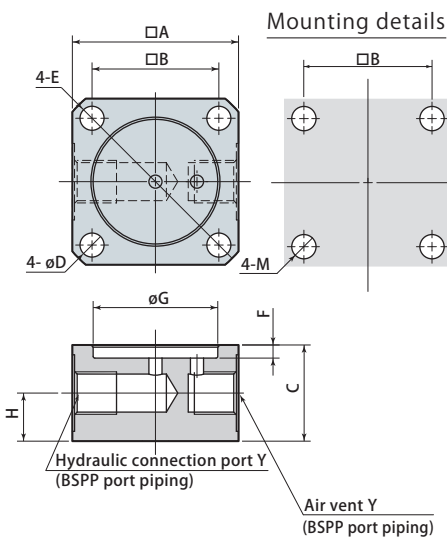
Model	CMH016-C	CMH022-C	CMH025-C	CMH030-C	CMH036-C	CMH048-C	CMH055-C	CMH065-C	CMH080-C
A	25	30	35	40	50	65	70	80	90
B	18	23	26	31	40	48	54	62	72
C	19	19	19	22	22	25	25	25	28
D	4.5	4.5	5.5	5.5	6.8	11	11	14	14
E	C2	C2	C3	C3	C3	C5	C5	C5	C5
F	1.5	3	3	3	3	4	4	4	4
G	14.5	20.5	23.5	28.5	34.5	46.5	53	63	78
H	9.5	9.5	9.5	11	11	12.5	12.5	12.5	14
M	M4	M4	M5	M5	M6	M10	M10	M12	M12
Y	G1/8	G1/8	G1/8	G1/8	G1/8	G1/4	G1/4	G1/4	G1/4
Mass	0.07 kg	0.09 kg	0.15 kg	0.21 kg	0.29 kg	0.67 kg	0.79 kg	1.01 kg	1.47 kg



**CMH** <sup>①</sup>-D (Example: CMH 022-D)

① Size

<b>CMH</b>	022 : For CMD02	- D : Piping block
	025 : For CMD04	
	030 : For CMD06	
	036 : For CMD10	
	048 : For CMD20	
	058 : For CMD40	



Model	CMH022-D	CMH025-D	CMH030-D	CMH036-D	CMH048-D	CMH058-D
A	30	35	40	50	65	70
B	23	26	31	40	48	54
C	19	19	22	22	25	25
D	4.5	5.5	5.5	6.8	11	11
E	C2	C3	C3	C3	C5	C5
F	3	3	3	3	4	4
G	20.5	23.5	28.5	34.5	46.5	56.5
H	9.5	9.5	11	11	12.5	12.5
M	M4	M5	M5	M6	M10	M10
Y	G1/8	G1/8	G1/8	G1/8	G1/4	G1/4
Mass	0.09 kg	0.14 kg	0.2 kg	0.28 kg	0.65 kg	0.76 kg