

Piping block model CSP□-D



Flow control valve model VCF015

Refer to page → 145

Model designation

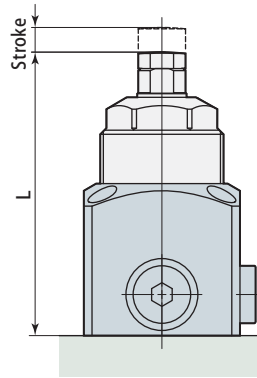
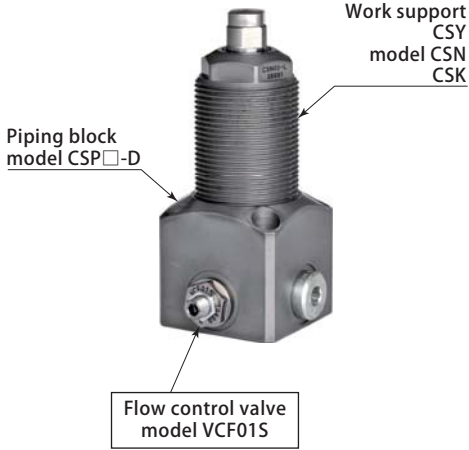
CSP ①-D (Example: CSP04-D)

① Size

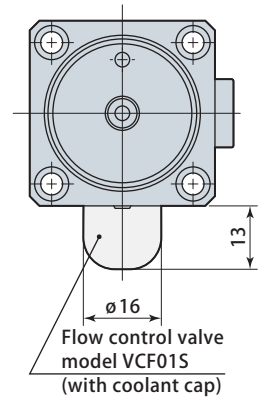
CSP	00 : For CSY00 CSN00 CSK00	D : Piping block
	(Nil) : For CSY03 CSN01 & CSN03 CSK01 & CSK03	
	04 : For CSY04 CSN04 CSK04	
	06 : For CSY06 CSN06 CSK06	

Work support mounting dimensions

Plunger lifting operation time can be individually adjusted for work support model CSY & CSN, by using optional piping block model CSP-D and flow control valve model VCF015.



Flow control valve mounting dimensions

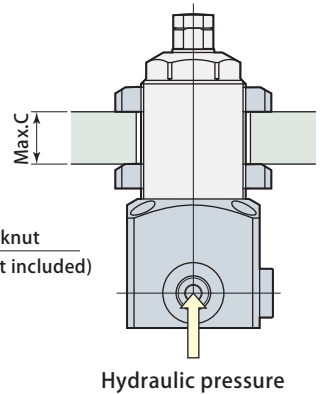
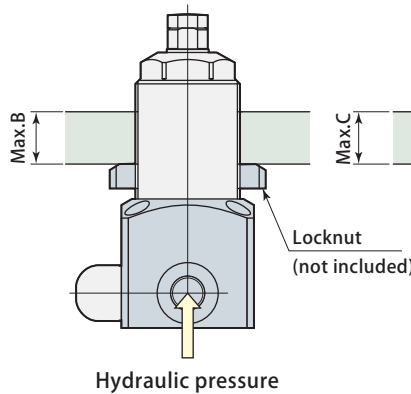
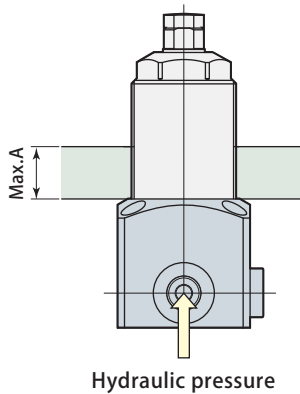
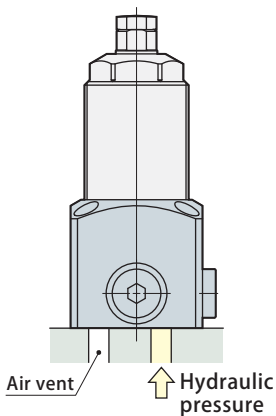


Piping block model	L *	Stroke	Work support models
CSP00-D	83	6.5	CSY00-CSN00-CSK00
CSP-D	69	6	CSN01-CSK01
CSP-D	90	8	CSY03-CSN03-CSK03
CSP04-D	86	8	CSY04-CSN04-CSK04
CSP06-D	99	10	CSY06-CSN06-CSK06

* For model CSK, stroke length shall be added on L.

Manifold piping example

BSPB port piping mounting example



Piping block model	Max. A	Max. B	Max. C	Work support models
CSP00-D	27	-	-	CSY00-CSN00-CSK00
CSP-D	12	-	-	CSN01-CSK01
CSP-D	32	25	18	CSY03-CSN03-CSK03
CSP04-D	26	-	-	CSY04-CSN04-CSK04
CSP06-D	37	27	17	CSY06-CSN06-CSK06

For dimensions not shown in above figure, refer to page → 128 (CSY), 132 (CSN), 138 (CSK), 140.

7MPa clamp & work support

Swing clamp

Link clamp

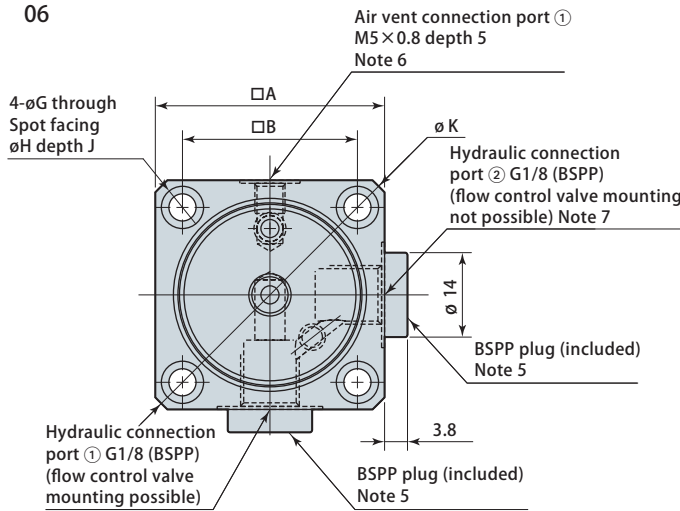
Clamp cylinder

Work support

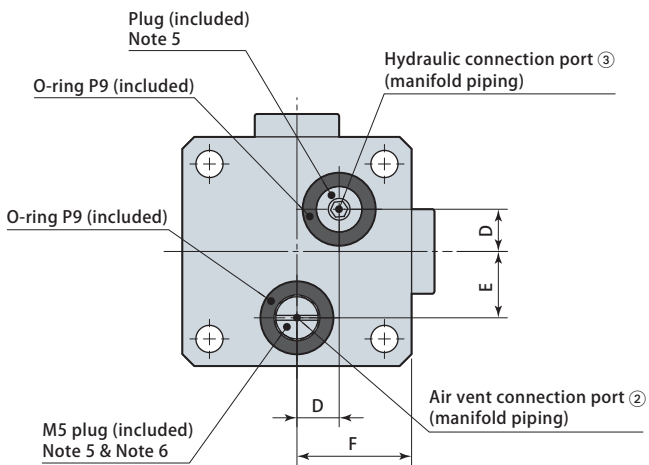
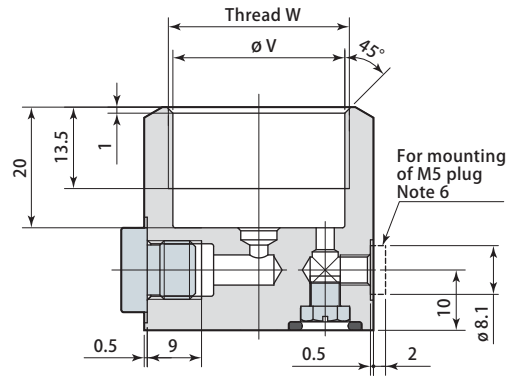
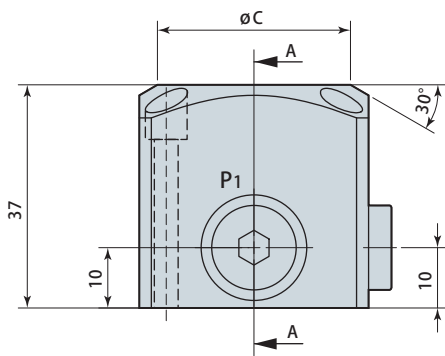
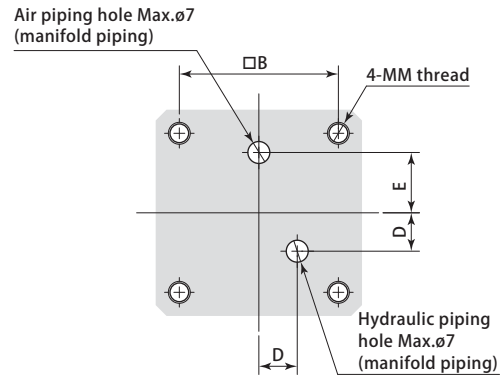
Option

Dimensions

00
CSP ()
04-D
06



Mounting details



	(mm)			
Model	CSP00-D	CSP-D	CSP04-D	CSP06-D
A	36	38	45	55
B	27	29	34	44
C	29	32	38	50
D	7	7	9	10
E	9	11	13	16
F	18	19	22.5	27.5
G	4.5	4.5	5.5	5.5
H	8	8	9	9
J	9	9	12	12
K	48	50	60	75
MM (nominal size × pitch)	M4 × 0.7	M4 × 0.7	M5 × 0.8	M5 × 0.8
V	24.5	28.5	34.5	43.5
W (nominal size × pitch)	M26 × 1.5	M30 × 1.5	M36 × 1.5	M45 × 1.5
Body tightening torque	35 ~ 45 N·m	40 ~ 50 N·m	45 ~ 55 N·m	55 ~ 65 N·m

⚠ Caution in use

- Note 1. When using for manifold piping, mounting surface finish must be no rougher than Rz6.3 (ISO4287:1997).
2. Mounting screws are not included.
3. Material of O-ring (included) is fluorocarbon (with hardness Hs90).
4. Provide the piping if there is a risk of coolant or metal chips intrusion from air vent.

5. Remove the plug of fitting connection port to be used when mounting.
6. In case of manifold piping, shift M5 plug from air vent connection port ② on the bottom face to the air vent connection port ① on side face.
7. No flow control valve can be mounted to hydraulic connection port ②.