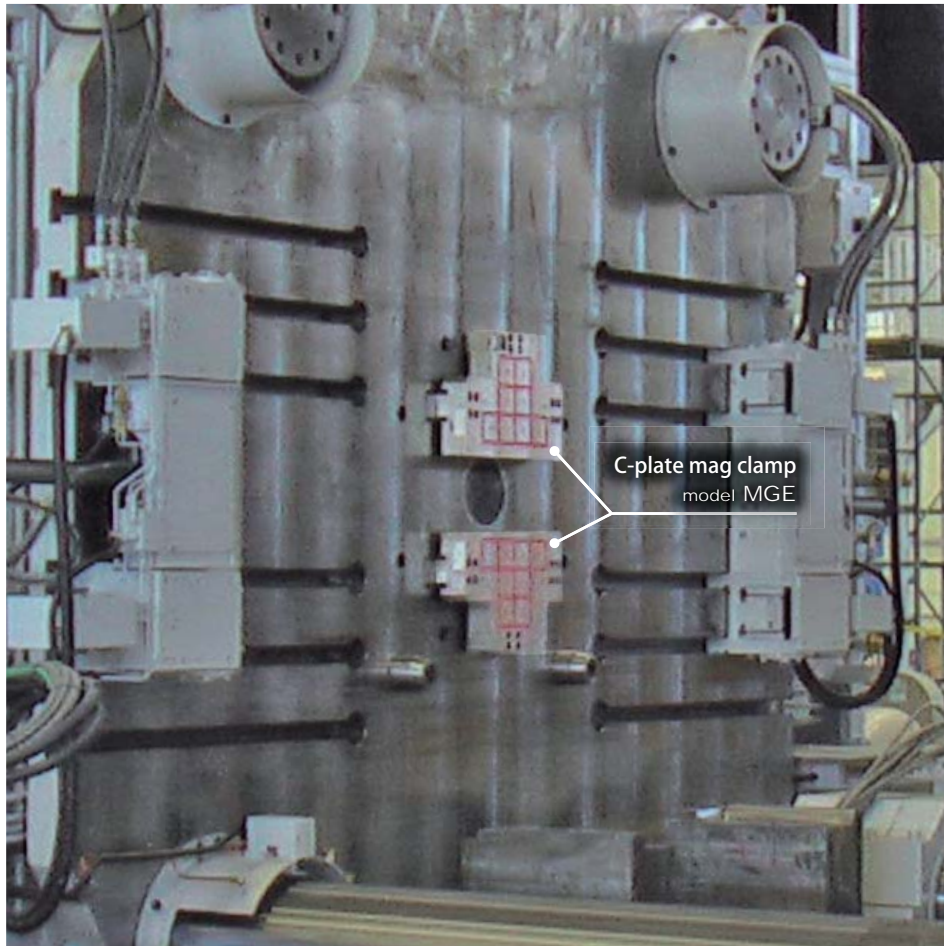


2010 new model

Pascal C-plate mag clamp

C-plate magnetic clamp

model **MGE**

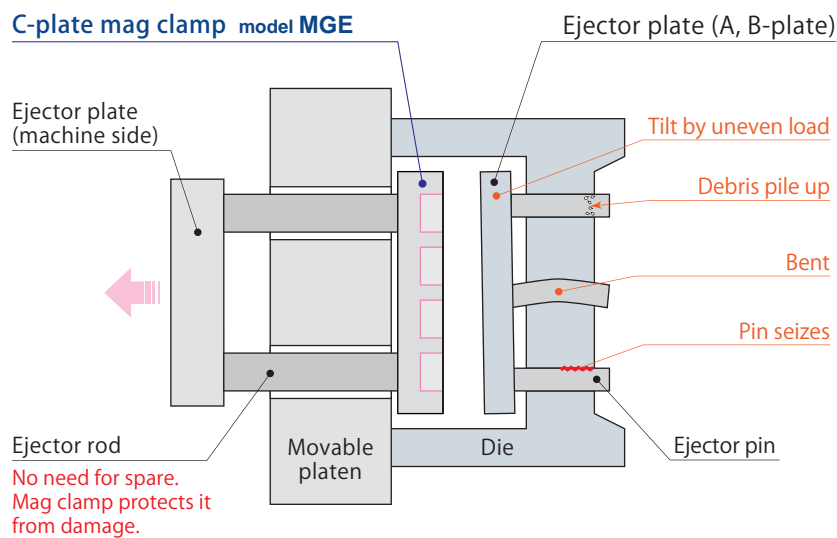


www.pascaleng.co.jp

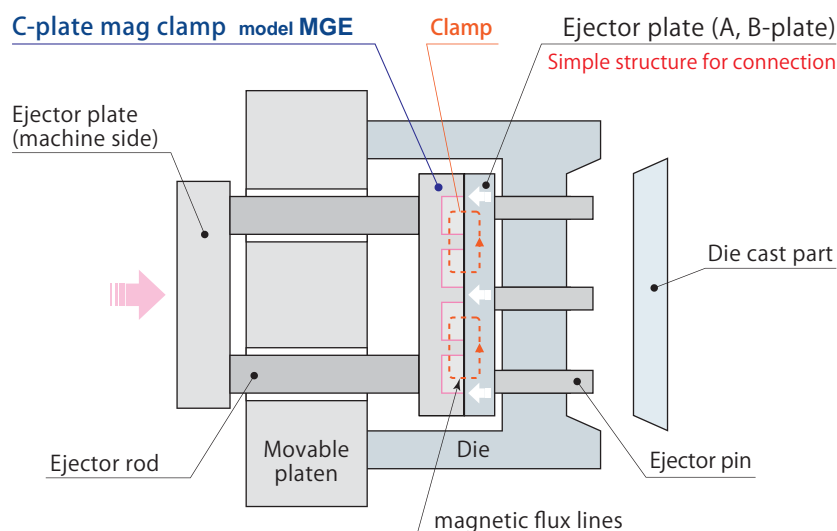
C-plate mag clamp

When the ejector plate draws back and ejector pin is fixed, a large load might cause damage to the die. However, the C-plate mag clamp can **prevent the die from such damage** by detaching from the plate if force exceeding clamp force is exerted while the plate is drawing back.

When ejector plate retracts back : Separation from ejector plate (A, B-plate)

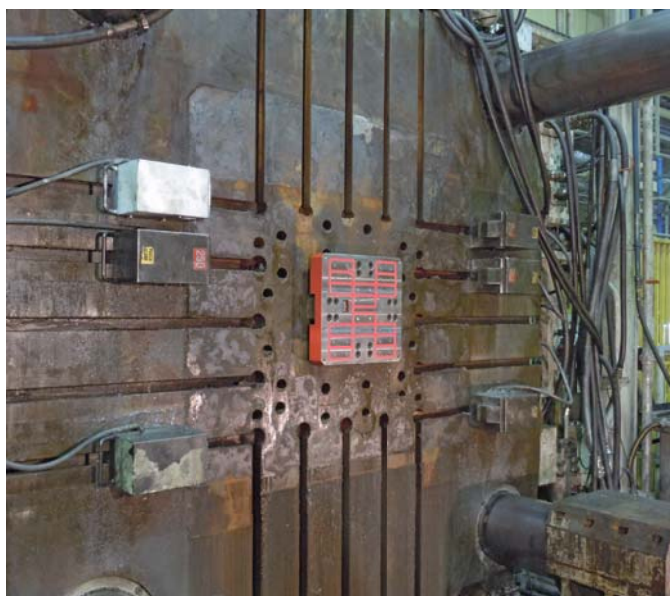


When castings are ejected

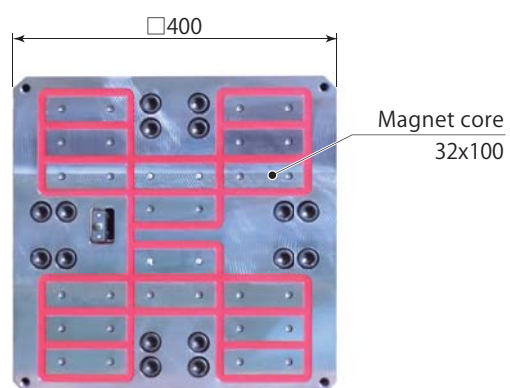
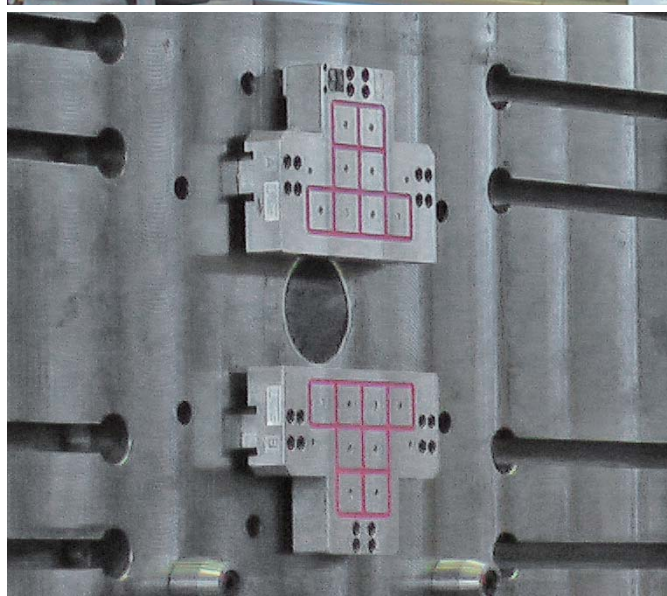
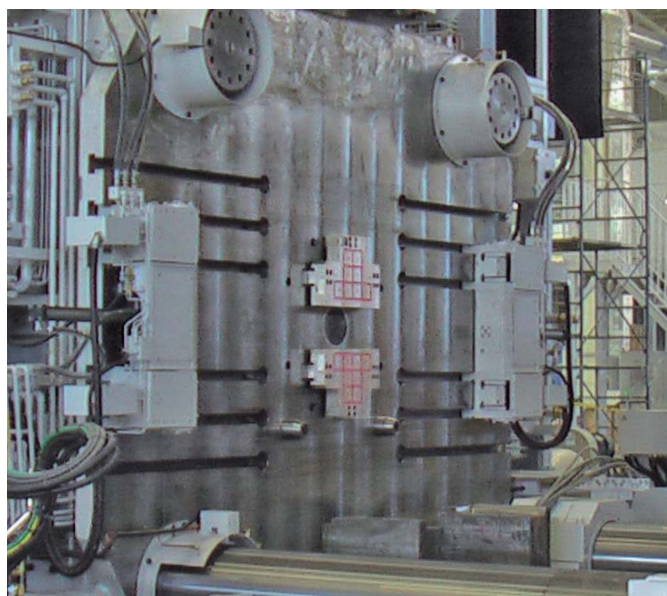


- Clamp ejector plate instantly with super strong permanent magnet.
- No electricity consumed during clamped condition. **Clean & Eco-friendly**

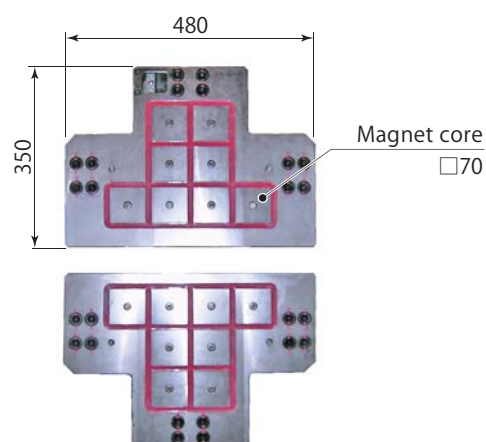
Installation on 2500 tonf die-casting machine



Installation on 4000 tonf die-casting machine



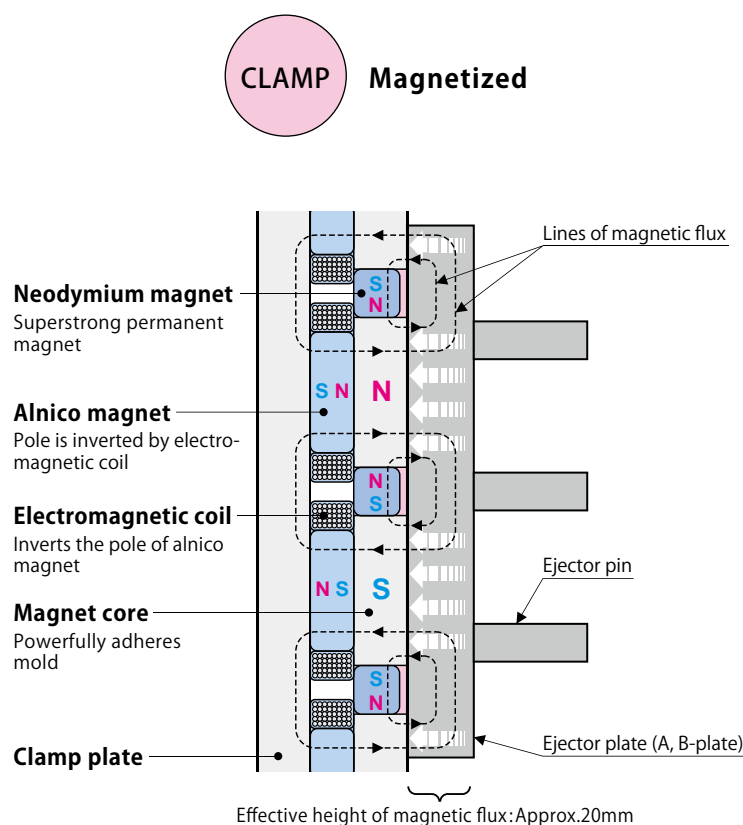
Max. clamping force : 55 kN



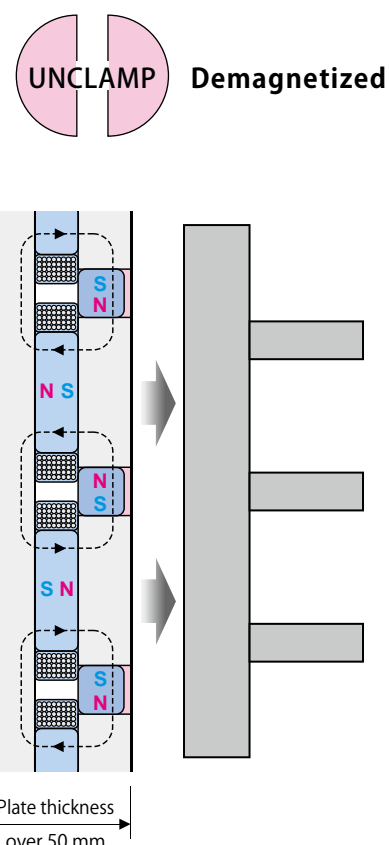
Max. clamping force : 117.6 kN (58.8 kNx2)

- Magnet cores are placed in accordance to the shape of the ejector plate. (made to order/design)

Structure and functions



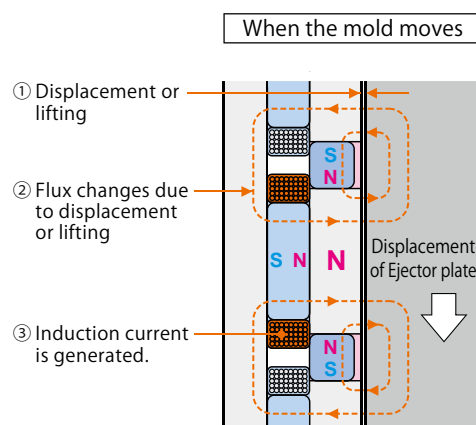
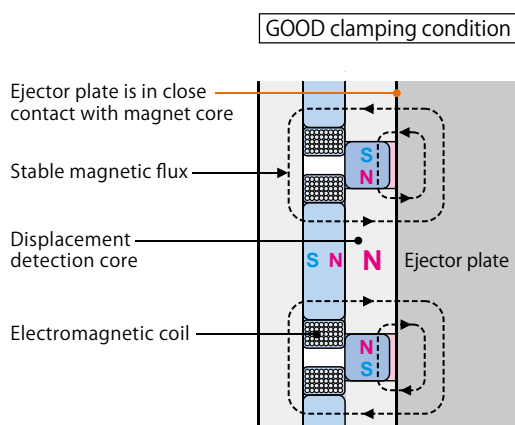
- ① Electromagnetic coil energized for 0.5 sec.
- ② Pole of Alnico magnet is inverted.
- ③ Neodymium magnet and Alnico magnet become unipolar.
- ④ Magnet core becomes strong magnet to adhere the ejector plate.



- ① Electromagnetic coil energized for 0.5 sec.
- ② Pole of Alnico magnet is inverted.
- ③ Magnetic Flux of Neodymium magnet and Alnico magnet is not emitted from the surface of the magnet core. Thus, it unclamps the ejector plate.

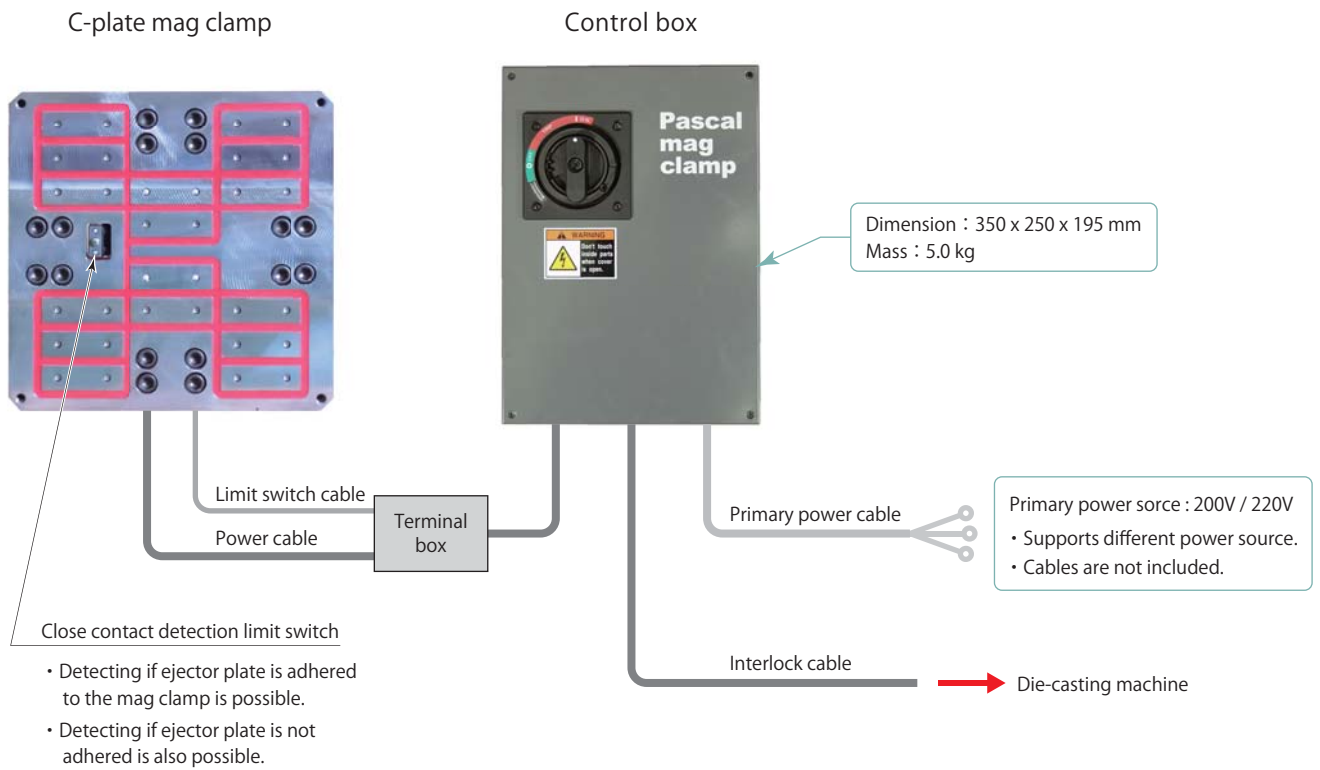
Displacement detection system (Standard)

PAT.



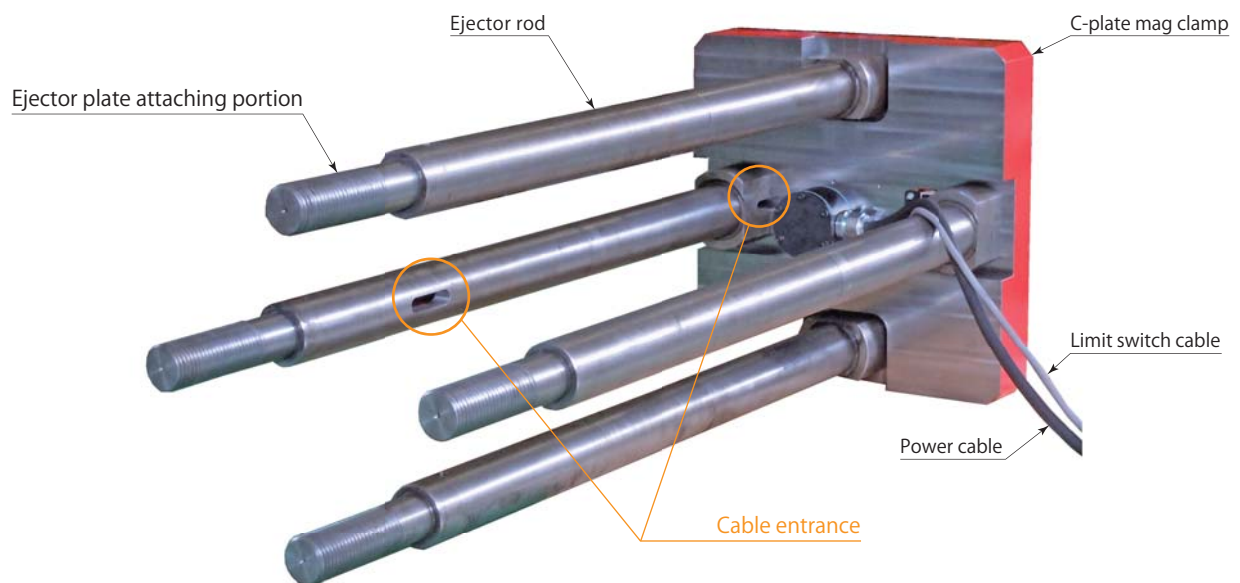
Displacement or lifting of the ejector plate can be detected by the electromagnetic coils built into the magnet core near the center of the clamp plates. When the ejector plate moves, these electromagnetic coils detect an induction current signal.

System structure (Reference)



● Ask us for details.

Hard-wiring





Itami, Hyogo, Japan 664-8502
TEL.(072)777-3333 FAX.(072)777-3520



CERTIFICATE OF APPROVAL ISO9001