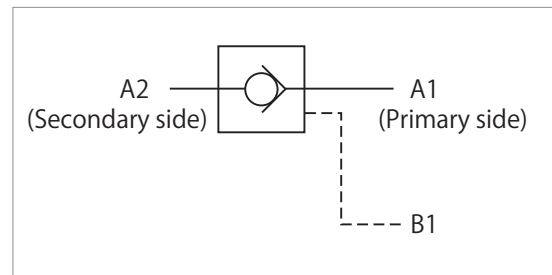


Pilot check valve model **VCP**

This is a non-leak pilot check valve, with which clamping circuit pressure can be retained over a long period of time after disengagement of hydraulic pressure source.

Specifications

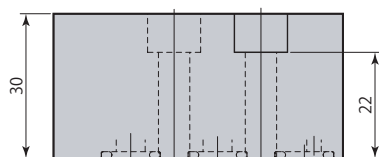
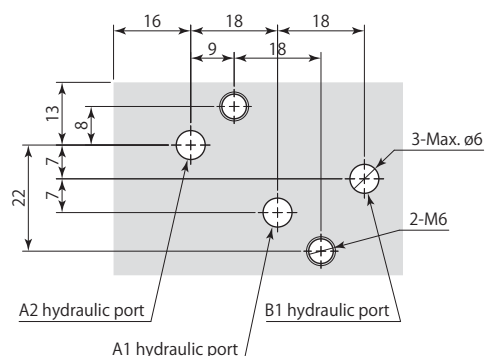
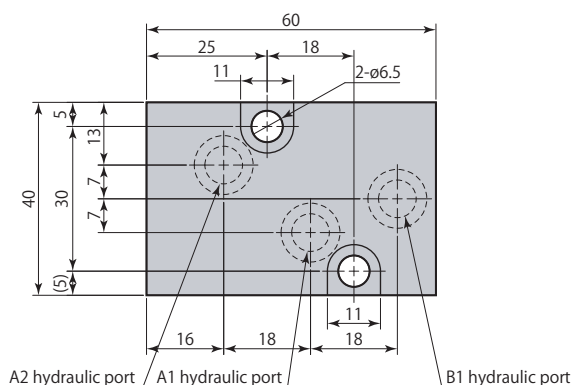
| Model | | VCP-LG | VCP-HG |
|----------------------------------|-----------------|---|-------------------|
| Mounting, piping methods | | Manifold mounting | Manifold mounting |
| Pressure range | MPa | 1~7 | 7~30 |
| Proof pressure | MPa | 10.5 | 37.5 |
| Cracking pressure | MPa | 0.019 | |
| Min. pilot pressure (open valve) | MPa | $0.01 + 0.24 \times \text{A2 hydraulic port (secondary side) pressure}$ | |
| Orifice area | mm ² | 14.2 | |
| Operating temperature | °C | 0~70 | |
| Fluid used | | General mineral based hydraulic oil (ISO-VG32 equivalent) | |
| Mass | kg | 0.5 | |

- Fluorocarbon has been adopted for seal sections where cutting fluid is applied, as a measure for the use of chlorine-based cutting fluid (this is not thermal resistant specification).

Dimensions

VCP-□G Manifold *With internal filter (A1 & A2 hydraulic ports)

Mounting details

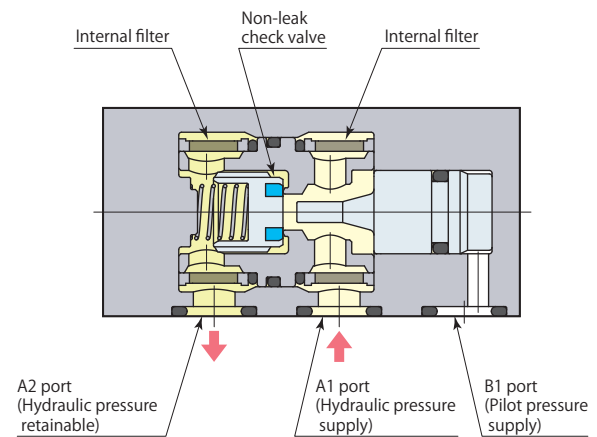
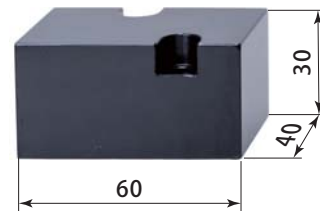
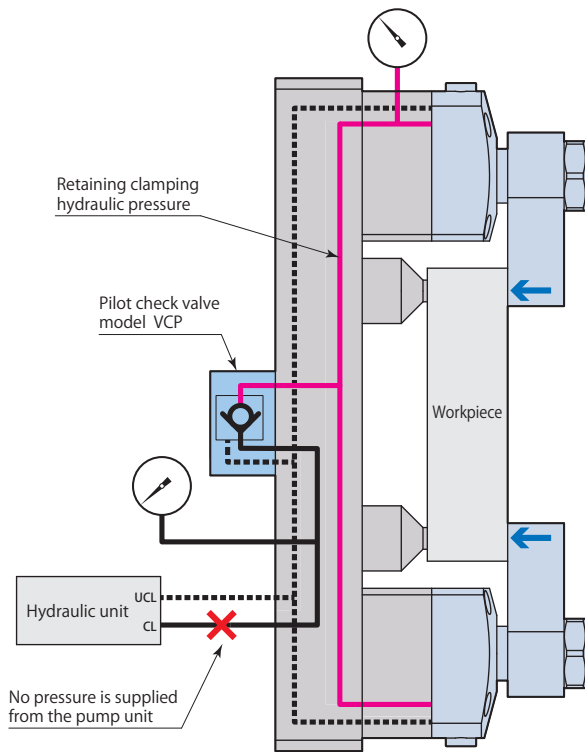


For manifold piping, the mounting surface finish must be no rougher than Rz6.3 (ISO4287:1997).

- Mounting screws are not included.
- Use in the double acting circuits.

The circuit being constantly pressurized from the A1 port is not available.

It ensures the clamp circuit pressure totally retained even when hydraulic unit provides zero pressure and can prevent the accident of workpiece fall due to a loose clamp. Downsized pilot check valve takes up minimum space on the jigs designed for a cradle or such a compact and limited mount area.



Preventing workpiece fall and clamp looseness
by retaining the hydraulic pressure

Pascal
corporation

Itami, Hyogo, Japan 664-8502
TEL. 072-777-3333 FAX. 072-777-3520