

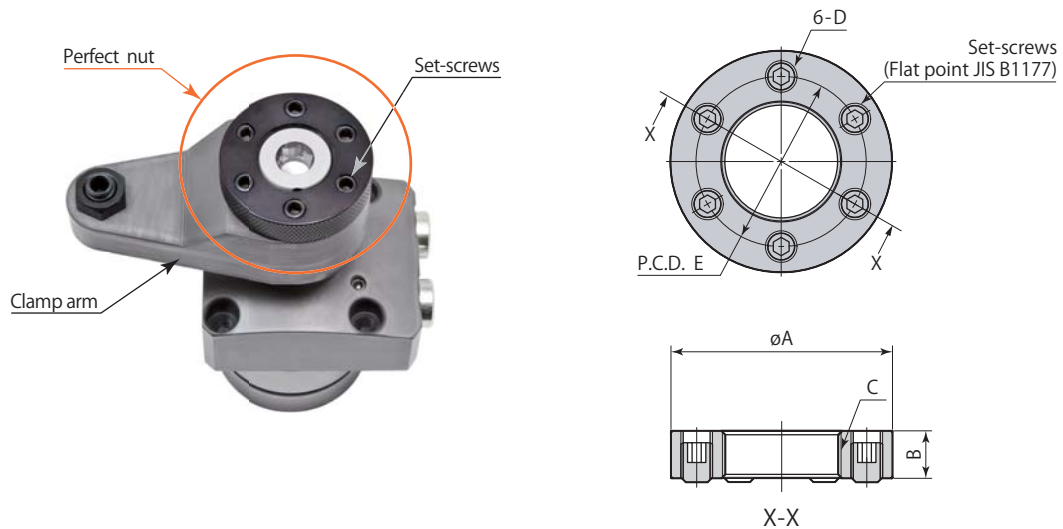
Perfect nut

Size

04

CTH 05 — MN : Perfect nut

06



Perfect nut		CTH04-MN	CTH05-MN	CTH06-MN
Applicable swing clamp		CTP04	CTP05	CTP06
Set-screws	Size	M6×1 length 8	M6×1 length 8	M8×1.25 length 10
	Recommended tightening torque	2.5 N·m	3 N·m	6 N·m
øA		32	40	48
B		8	9	10
C		M16×1.5	M20×1.5	M22×1.5
D		M6×1	M6×1	M8×1.25
E		24	30	35
Mass		0.04 kg	0.06 kg	0.12 kg

mm

Perfect release nut

Size

04

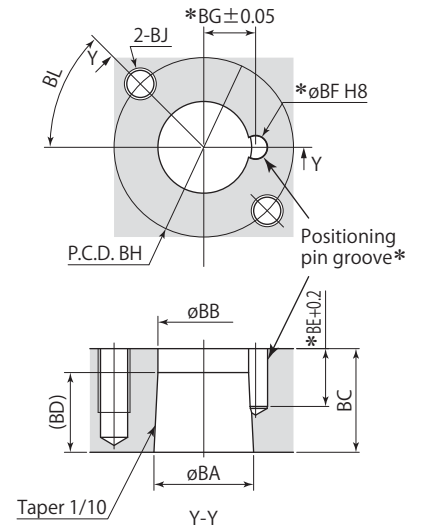
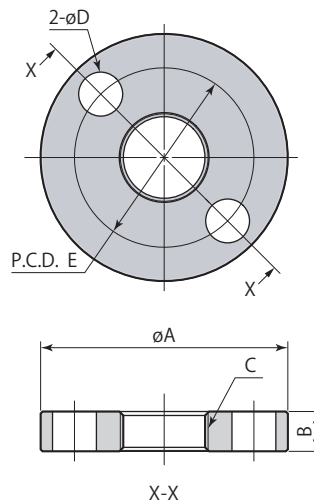
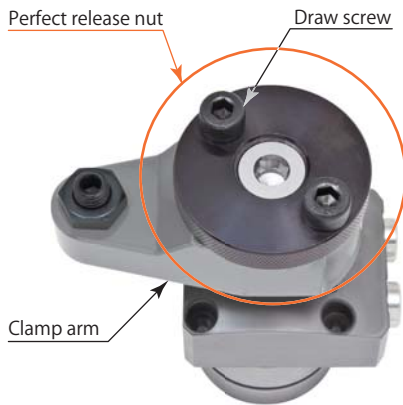
CTH 05 — MNR : Perfect release nut

06

Clamp arm mounting details

(Using perfect release nut)

Drill a 1/10 taper hole into the clamp arm, and provide the tap holes for draw screws to remove the clamp arm.



*: No need to machine the pin groove (BE, ϕBF , BG) unless positioning pin is used for the arm.

mm

Perfect release nut	CTH04-MNR	CTH05-MNR	CTH06-MNR
Applicable swing clamp	CTP04	CTP05	CTP06
Recommended draw screw	M6×1	M8×1.25	M10×1.5
ϕA	45	54	62
B	8	9	10
C	M16×1.5	M20×1.5	M22×1.5
ϕD	6.8	9	11
E	34	39	45
Mass	0.08 kg	0.13 kg	0.20 kg
ϕBA	18 ^{+0.016} _{-0.034}	22 ^{-0.020} _{-0.041}	25 ^{-0.020} _{-0.041}
ϕBB	16.5	20.5	23
BC	19	23	26
BD	15	15	20
BE	10.5	12.5	14.5
ϕBF (pin groove diameter)	4 ^{+0.018} ₀	5 ^{+0.018} ₀	6 ^{+0.018} ₀
BG	9	11.5	13
BH	34	39	45
BJ	M6	M8	M10
BL	Standard 60° allowable range 45°~70° (within range that there is no interference with set-screws)		

● Draw screws are not included with perfect release nut.